

KEARNEY, NEBRASKA

AL-541 (FAA)

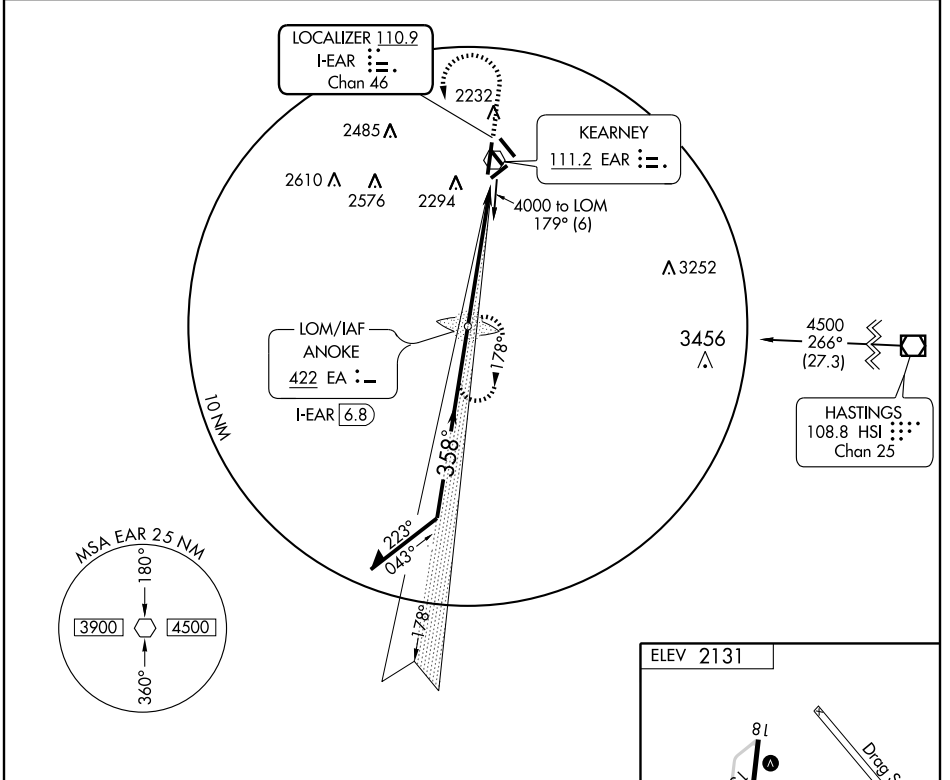
LOC/DME I- <b>EAR</b> <b>110.9</b> Chan <b>46</b>	APP CRS <b>358°</b>	Rwy Idg <b>7094</b> TDZE <b>2131</b> Apt Elev <b>2131</b>
---	------------------------	---

# ILS RWY 36

KEARNEY RGNL (EAR)

NA	MALSR AS	MISSED APPROACH: Climb to 4000 then left turn direct EAR VOR, then via EAR R-179 to ANOKE LOM/INT/I- <b>EAR</b> 6.8 DME and hold.
----	-------------	---

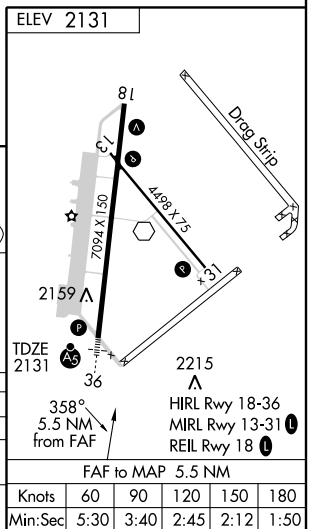
AWOS-3 <b>123.875</b>	MINNEAPOLIS CENTER <b>119.4 278.8</b>	UNICOM <b>123.0</b> (CTAF)
--------------------------	--	-------------------------------



NC-2, 22 OCT 2009 to 19 NOV 2009

NC-2, 22 OCT 2009 to 19 NOV 2009

Remain within 10 NM ANOKE LOM I- <b>EAR</b> 6.8 4000 3949 178° 358° GS 3.00° TCH 39 4000 I- <b>EAR</b> 1.3 5.5 NM	4000 	EAR 111.2 	EAR R-179 	EA 422 I- <b>EAR</b> 6.8 
	CATEGORY	A	B	C
S-ILS 36		2331-1/2	200 (200-1/2)	
S-LOC 36	2540-1/2	409 (500-1/2)	2540-3/4	409 (500-3/4)
CIRCLING	2600-1	469 (500-1)	2600-1/2	2700-2 569 (600-2)



KEARNEY, NEBRASKA  
Amdt 1 07354

40°44'N-99°00'W

# KEARNEY RGNL (EAR)

## ILS RWY 36