

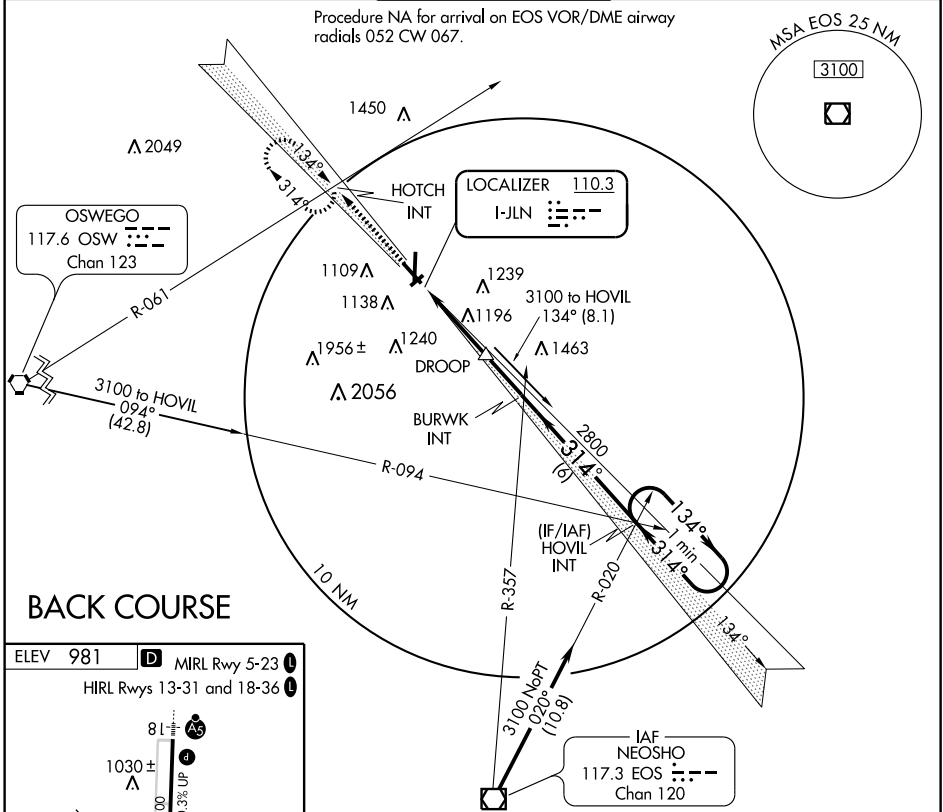
LOC BC RWY 31

JOPLIN RGNL (JLN)

LOC I-JLN 110.3	APP CRS 314°	Rwy Idg 5802	TDZE 978	Apt Elev 981
---------------------------	------------------------	-----------------	-------------	-----------------

<p>ODALS (NSTD) 1438'. Inoperative table does not apply.</p>	<p>ODALS</p>	<p>MISSED APPROACH: Climb to 3100 via I-JLN NW course to HOTCH INT and hold.</p>
--	--------------	--

<p>ATIS 120.85</p>	<p>KANSAS CITY CENTER 128.6 282.325</p>	<p>JOPLIN TOWER* 119.8 (CTAF) 282.2</p>	<p>GND CON 121.6</p>	<p>UNICOM 122.95</p>
-------------------------------	--	--	---------------------------------	---------------------------------



NC-3, 22 OCT 2009 to 19 NOV 2009

NC-3, 22 OCT 2009 to 19 NOV 2009

ELEV 981 MIRL Rwy 5-23

HIRL Rwy 13-31 and 18-36

1030 ± Δ

1031

1035 ± Δ

1034

1032 ± Δ

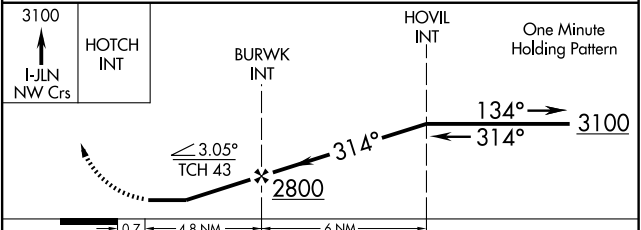
1040 ± Δ

314° 5.5 NM

1040 ± Δ from FAF

FAF to MAP 4.8 NM

Knots	60	90	120	150	180
Min:Sec	4:48	3:12	2:24	1:55	1:36



CATEGORY	A	B	C	D
S-31	1500-1	522 (600-1)	1500-1½ 522 (600-1½)	1500-1¾ 522 (600-1¾)
CIRCLING	1500-1	519 (600-1)	1500-1½ 519 (600-1½)	1540-2 559 (600-2)