

HERINGTON, KANSAS

AL-539 (FAA)

NDB HRU <b>407</b>	APP CRS <b>342°</b>	Rwy Idg TDZE Apt Elev	<b>4184</b> <b>1480</b> <b>1480</b>
-----------------------	------------------------	-----------------------------	---

# NDB or GPS RWY 35

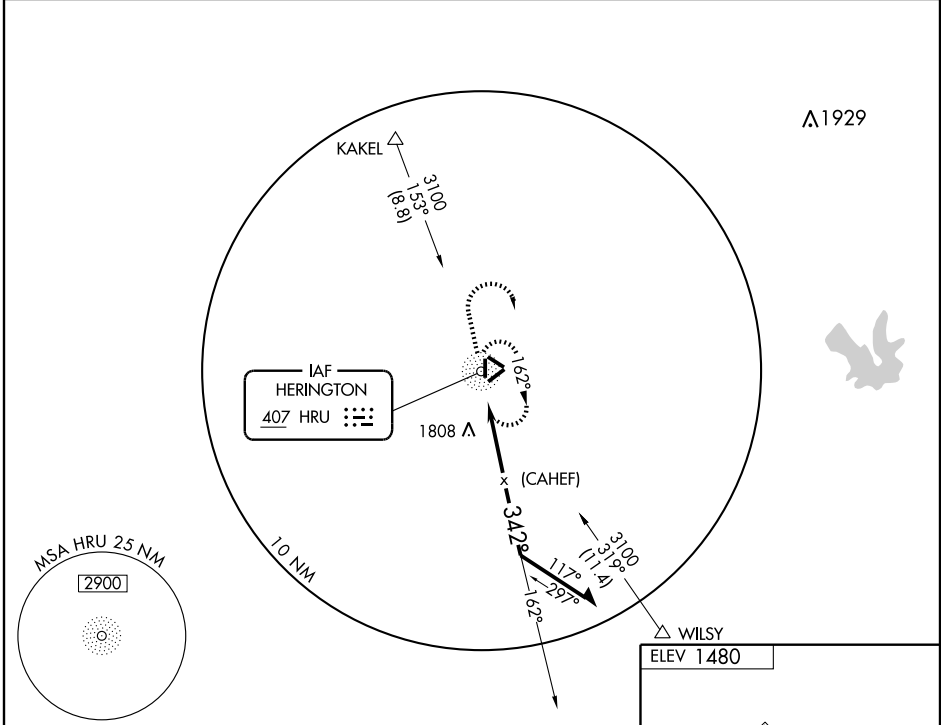
HERINGTON RGNL (HRU)

Use Manhattan altimeter setting; when not available use Salina altimeter setting and increase all MDAs 40 feet.

MISSED APPROACH: Climb to 3100 then right turn direct HRU NDB and hold.

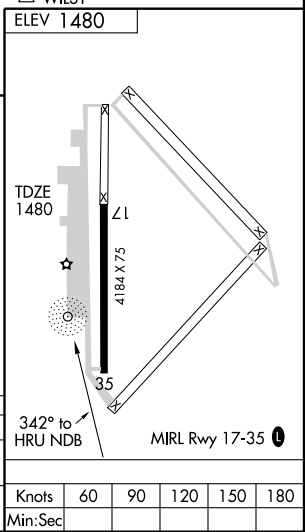
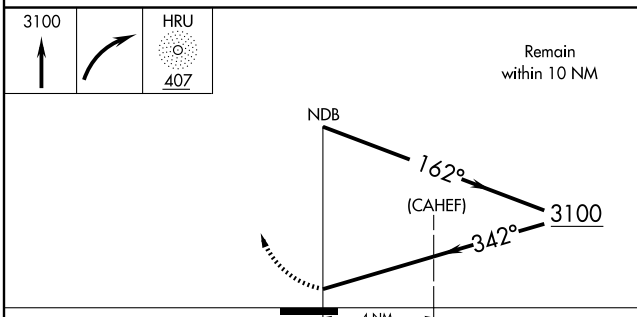
▲ NA

KANSAS CITY CENTER <b>127.35 257.975</b>	UNICOM <b>122.8</b>	CTAF <b>122.9</b> <b>L</b>
---	------------------------	-------------------------------



NC-2, 22 OCT 2009 to 19 NOV 2009

NC-2, 22 OCT 2009 to 19 NOV 2009



CATEGORY	A	B	C	D
S-35	2300-1 820 (900-1)	2300-1¼ 820 (900-1¼)	2300-2½ 820 (900-2½)	2300-2¾ 820 (900-2¾)
CIRCLING	2300-1 820 (900-1)	2300-1¼ 820 (900-1¼)	2300-2½ 820 (900-2½)	2300-2¾ 820 (900-2¾)

HERINGTON, KANSAS  
Amdt 1 07298

38°42'N-96°48'W

# HERINGTON RGNL (HRU)

## NDB or GPS RWY 35