

PIKES FOUR DEPARTURE

SL-538 (FAA)

AURORA/BUCKLEY AFB (BKF)
AURORA, COLORADO

ATIS
119.675 259.3
CLNC DEL
121.6 275.8
DENVER DEP CON
128.45 251.075

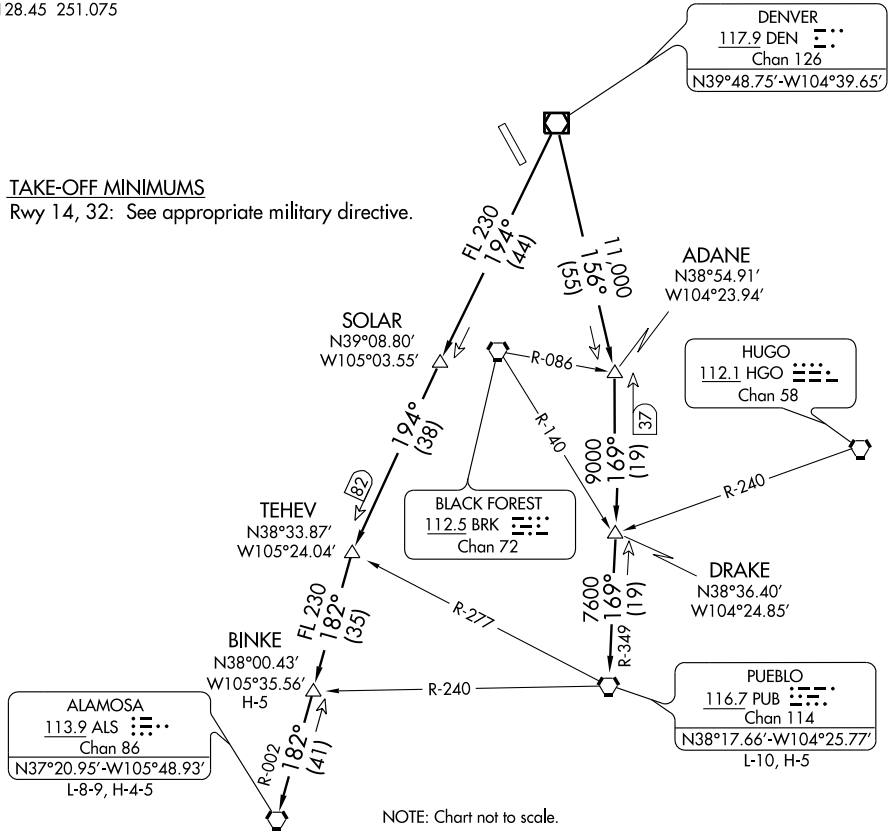
DENVER
117.9 DEN
Chan 126
N39°48.75'-W104°39.65'

TAKE-OFF MINIMUMS

Rwy 14, 32: See appropriate military directive.

SW-1, 22 OCT 2009 to 19 NOV 2009

SW-1, 22 OCT 2009 to 19 NOV 2009



DEPARTURE ROUTE DESCRIPTION

Fly assigned heading and altitude for radar vectors to assigned transition. Expect filed altitude 10 minutes after departure.

LOST COMMUNICATIONS: If no transmissions are received within one minute after departure, maintain assigned heading until 7000 feet, then climb to filed altitude via direct DEN VOR/DME, thence via assigned transition. If filed altitude is above 10,000 feet, cross DEN VOR/DME at or above 11,000 feet.

ALAMOSA TRANSITION (PIKES4.ALS): From over DEN VOR/DME via DEN R-194 and ALS R-002 to ALS VORTAC.

BINKE TRANSITION (PIKES4.BINKE): From over DEN VOR/DME via DEN R-194 and ALS R-002 to BINKE INT.

PUEBLO TRANSITION (PIKES4.PUB): From over DEN VOR/DME via DEN R-156 and PUB R-349 to PUB VORTAC.

PIKES FOUR DEPARTURE