

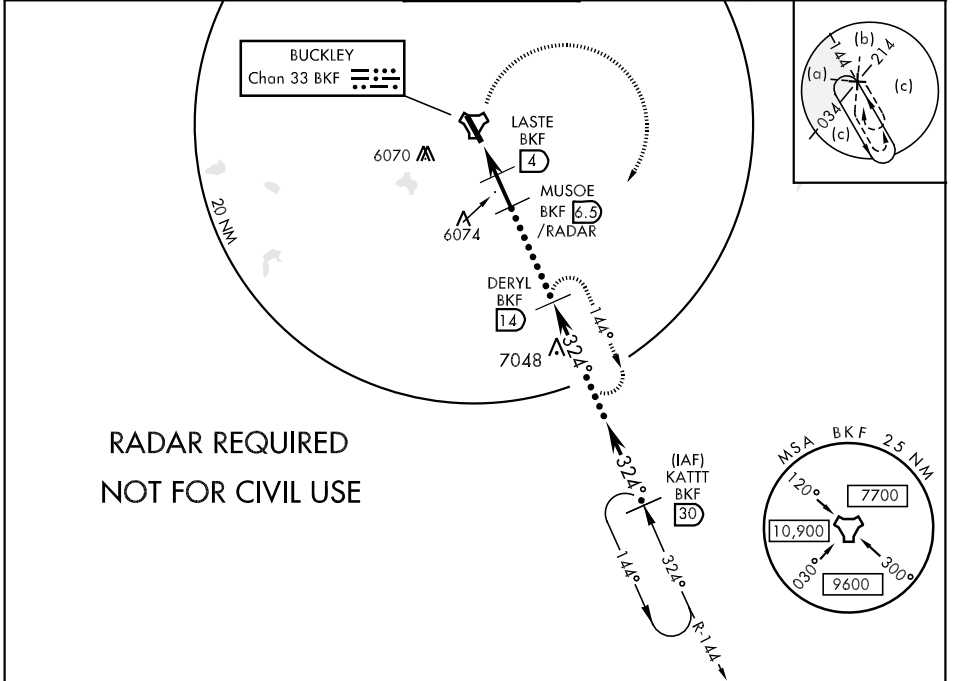
TACAN BKF Chan 33	APCH CRS 324°	Rwy Idg 11,000 TDZE 5662 Arpt Elev 5662	JAL-538 [USAF]	BUCKLEY AFB (KBKF)
----------------------	------------------	---	----------------	--------------------

▼ * When ALS inop, increase CAT C vis to 1¾ miles, CAT D vis to 2 miles, CAT E vis to 2¼ miles.

ALSF-1 

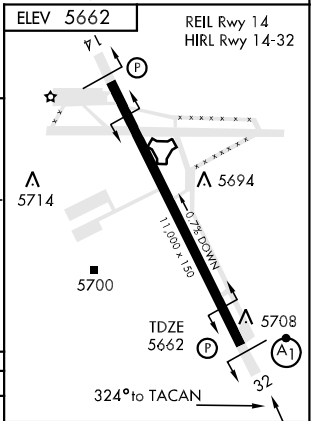
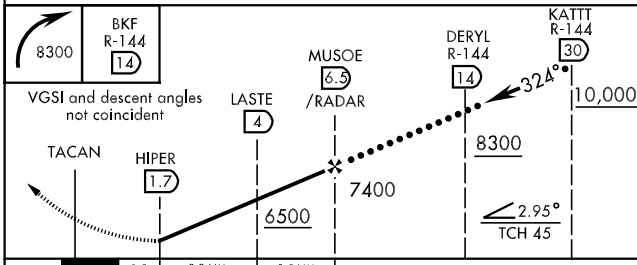
MISSED APPROACH: Climbing right turn to 8300 to DERYL (BKF R-144/14 DME) and hold.

ATIS * 119.675 259.3	DENVER APP CON 128.45 251.075	BUCKLEY TOWER * 121.0 291.675	GND CON 121.6 275.8	CLNC DEL 121.6 275.8
-------------------------	----------------------------------	----------------------------------	------------------------	-------------------------



**RADAR REQUIRED
NOT FOR CIVIL USE**

EMERG SAFE ALT 100 NM 16,500



CATEGORY	C		D	E
	S-32 *	6280/60 618 (700-1¼)	6280-1½ 618 (700-1½)	6280-1¾ 618 (700-1¾)
CIRCLING	6280-1¾ 618 (700-1¾)	6300-2 638 (700-2)	6500-3 838 (900-3)	

LOC FAF to MAP 4.8 NM					
Knots	90	120	150	180	200
Min:Sec	3:12	2:24	1:55	1:36	1:26

SW-1, 22 OCT 2009 to 19 NOV 2009

SW-1, 22 OCT 2009 to 19 NOV 2009