

LOC I-BKF 109.7	APCH CRS ILS 320°	Rwy Idg 11,000 TDZE 5662 Arprt Elev 5662
---------------------------	--------------------------------	---

JAL-538 [USAF]

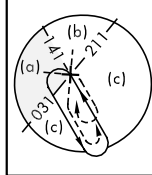
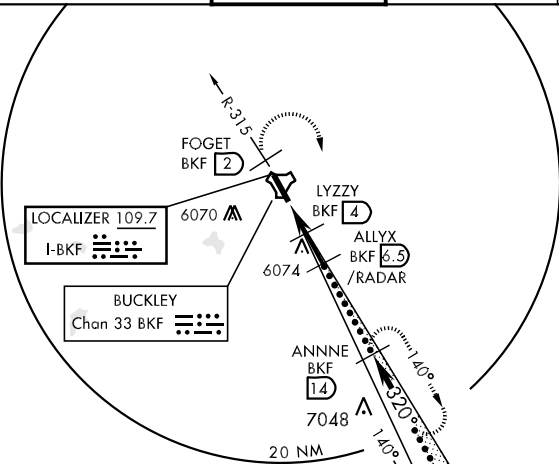
BUCKLEY AFB (BKF)

* When ALS inop, increase CAT CDE RVR to 40 and vis to ¾ miles.
 ** When ALS inop, increase CAT C vis to 1¾ miles, CAT D vis to 2 miles, CAT E vis to 2¼ miles.

 ALSF-1

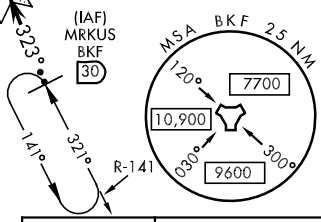
 MISSED APPROACH: Climb to 8200 via BKF R-315 to FOGET (2 DME), then climbing right turn to ANNNE (BKF R-140/14 DME) and hold.

ATIS * 119.675 259.3	DENVER APP CON 128.45 251.075	BUCKLEY TOWER * 121.0 291.675	GND CON 121.6 275.8	CLNC DEL 121.6 275.8
--------------------------------	---	---	-------------------------------	--------------------------------

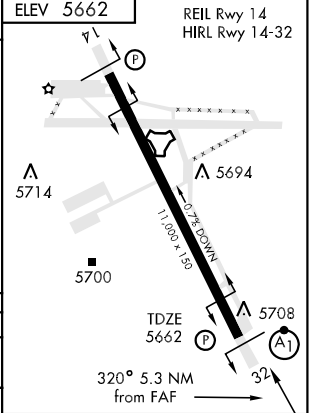
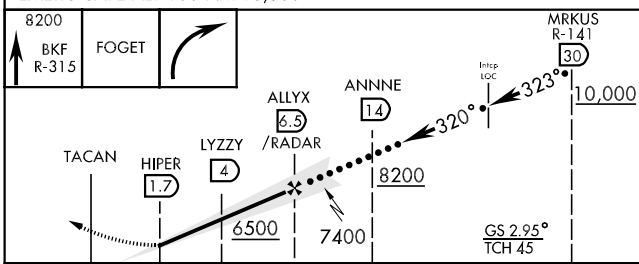


RADAR REQUIRED

NOT FOR CIVIL USE



EMERG SAFE ALT 100 NM 16,500



CATEGORY	C	D	E
S-ILS 32 *	5862/24	200	(200-½)
S-LOC 32 **	6280/60 618 (700-1¼)	6280-1½ 618 (700-1½)	6280-1¾ 618 (700-1¾)
CIRCLING	6280-1¾ 618 (700-1¾)	6300-2 638 (700-2)	6500-3 838 (900-3)

LOC FAF to MAP 4.8 NM					
Knots	90	120	150	180	200
Min:Sec	3:12	2:24	1:55	1:36	1:26

SW-1, 22 OCT 2009 to 19 NOV 2009

SW-1, 22 OCT 2009 to 19 NOV 2009