

DALHART, TEXAS

AL-537 (FAA)

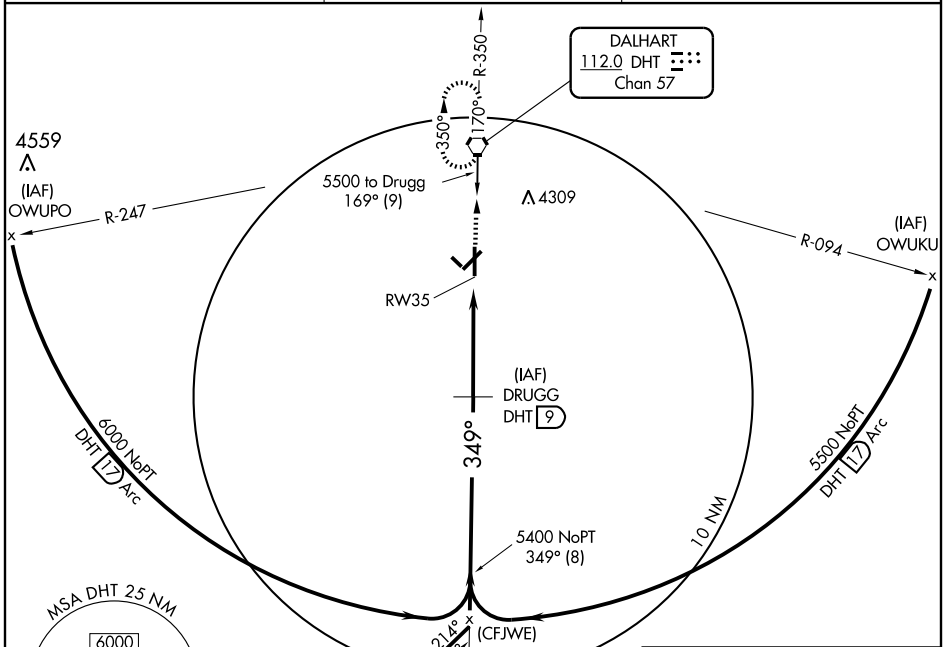
VORTAC DHT 112.0 Chan 57	APP CRS 349°	Rwy ldg TDZE Apt Elev	6400 3988 3991
---------------------------------------	------------------------	-----------------------------	---

VOR/DME or GPS RWY 35

DALHART MUNI (DHT)

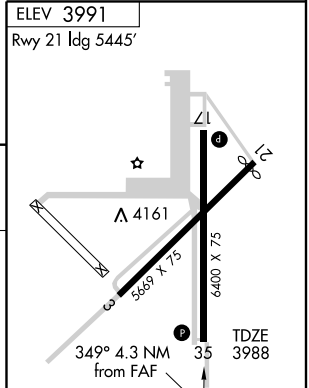
⚠ Circling not authorized west of Rwy 17-35. **⚠** MISSED APPROACH: Climb to 5500 direct DHT VORTAC and hold.

ASOS 134.075	ALBUQUERQUE CENTER 127.85 285.475	UNICOM 122.95 (CTAF) 📻
------------------------	---	---



SC-2, 22 OCT 2009 to 19 NOV 2009

SC-2, 22 OCT 2009 to 19 NOV 2009



CATEGORY	A	B	C	D
S-35	4340-1 352 (400-1)			4340-1¼ 352 (400-1¼)
CIRCLING	4440-1 449 (500-1)	4460-1 469 (500-1)	4460-1½ 469 (500-1½)	4660-2 669 (700-2)

	Knots	60	90	120	150	180
	Min:Sec					

DALHART, TEXAS
Amdt 2B 08045

36°01'N-102°33'W

DALHART MUNI (DHT) VOR/DME or GPS RWY 35