

DALHART, TEXAS

AL-537 (FAA)

GPS RWY 17

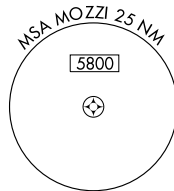
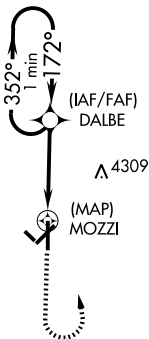
DALHART MUNI (DHT)

APP CRS 172°	Rwy Idg 6400
	TDZE 3990
	Apt Elev 3991

⚠ Circling not authorized west of Rwy 17-35. **MISSED APPROACH:** Climb to 5000 then climbing left turn to 5400 direct DALBE and hold.

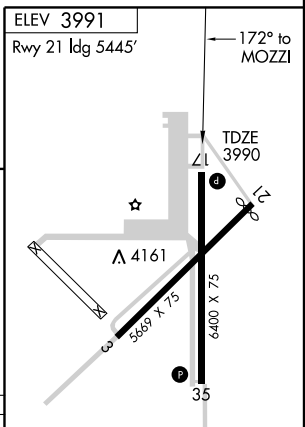
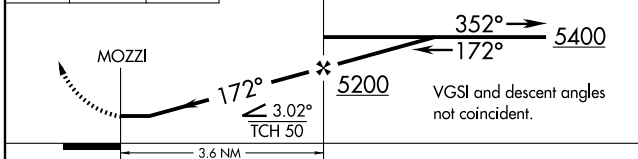
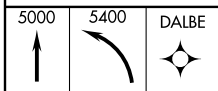
ASOS 134.075	ALBUQUERQUE CENTER 127.85 285,475	UNICOM 122.95 (CTAF) 0
------------------------	---	----------------------------------

4730 **⚠**



SC-2, 22 OCT 2009 to 19 NOV 2009

SC-2, 22 OCT 2009 to 19 NOV 2009



CATEGORY	A	B	C	D
S-17	4520-1	530 (600-1)	4520-1½ 530 (600-1½)	4520-1¾ 530 (600-1¾)
CIRCLING	4520-1	529 (600-1)	4520-1½ 529 (600-1½)	4660-2 669 (700-2)

REIL Rwy 17 and 35
MIRL Rwy 3-21 and 17-35 **0**

DALHART, TEXAS
Orig-B 08045

36°01'N-102°33'W

DALHART MUNI (DHT)

GPS RWY 17