

BATTLE MOUNTAIN, NEVADA

AL-534 (FAA)

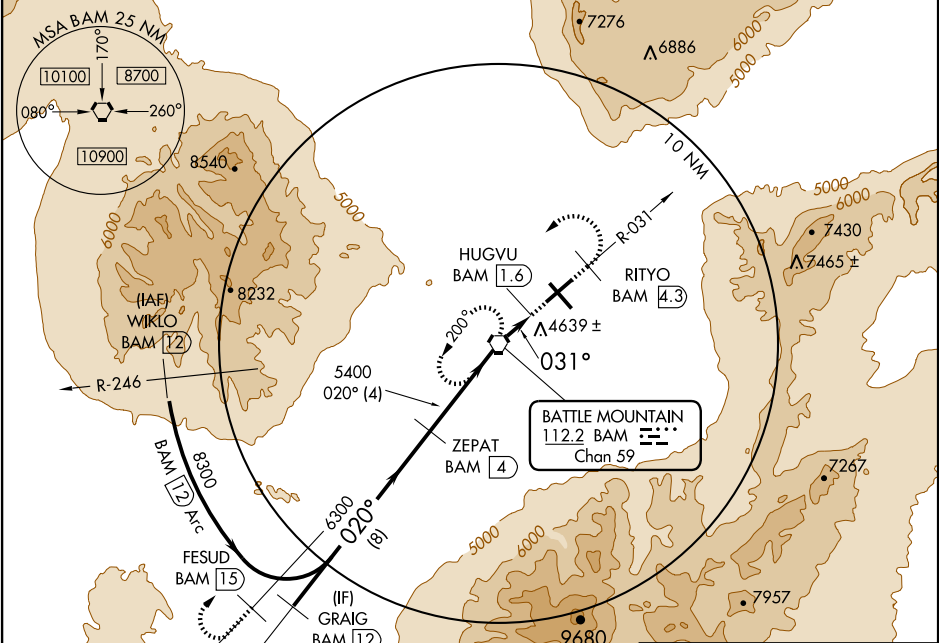
# VOR/DME RWY 3

BATTLE MOUNTAIN (BAM)

VORTAC BAM <b>112.2</b> Chan 59	APP CRS <b>031°</b>	Rwy Idg TDZE Apt Elev <b>7299</b> <b>4531</b> <b>4532</b>
---------------------------------------	------------------------	--------------------------------------------------------------------------

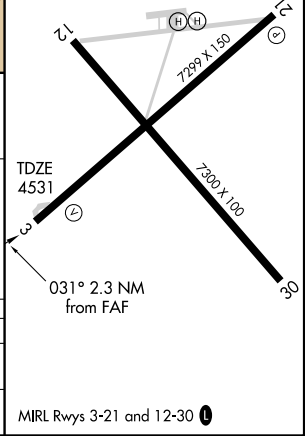
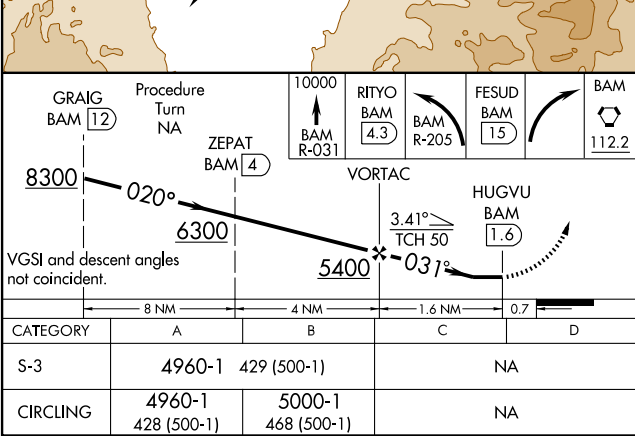
**▼** MISSED APPROACH: Climb to 10000 via BAM VORTAC R-031 to RITYO/BAM 4.3 DME and left turn direct BAM VORTAC and via BAM VORTAC R-205 to FESUD/BAM 1.5 DME and right turn direct BAM VORTAC and hold.

AWOS-3 <b>119.45</b>	SALT LAKE CITY CENTER <b>132.25 338.35</b>	UNICOM <b>122.8 (CTAF)</b>
-------------------------	-----------------------------------------------	-------------------------------



SW-4, 22 OCT 2009 to 19 NOV 2009

SW-4, 22 OCT 2009 to 19 NOV 2009



BATTLE MOUNTAIN, NEVADA  
Amdt 6 09127

40°36'N-116°52'W

BATTLE MOUNTAIN (BAM)  
VOR/DME RWY 3

MIRL Rwy's 3-21 and 12-30