

LOC I-TUU	APP CRS	Rwy Idg	<b>6517</b>
<b>108.7</b>	<b>298°</b>	TDZE	<b>828</b>
		Apt Elev	<b>828</b>

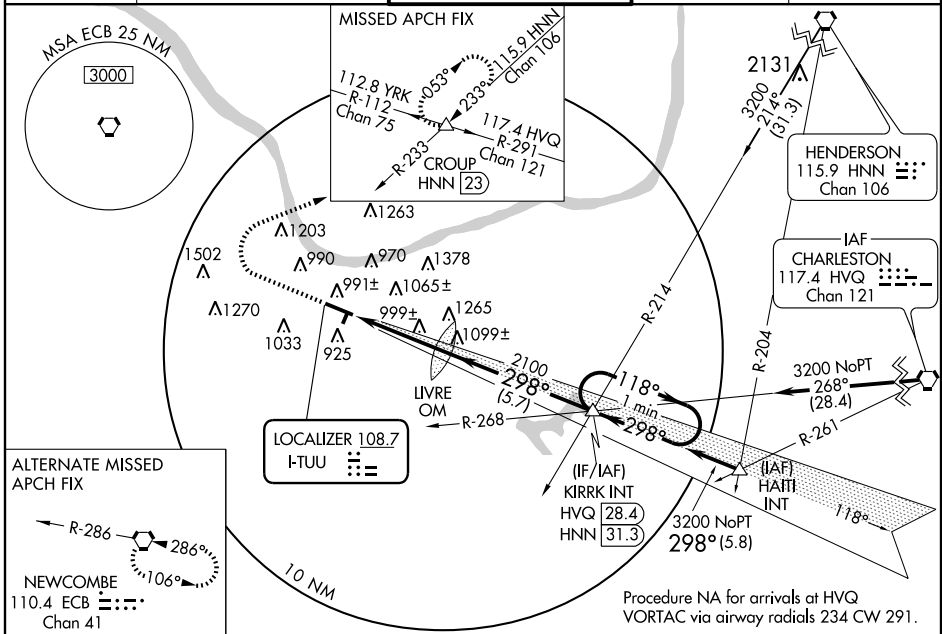
# ILS or LOC RWY 30

HUNTINGTON / TRI-STATE/MILTON J. FERGUSON FIELD (HTS)

**ASR** When VGSI inop, Circling Rwy 3 NA at night.

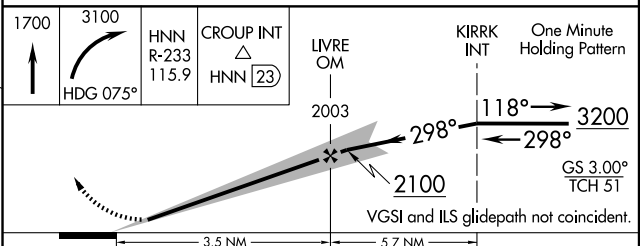
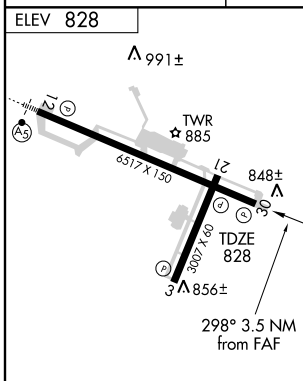
**MISSED APPROACH:** Climb to 1700 then climbing right turn to 3100 via heading 075° and HNN VORTAC R-233 to CROUP Int/HNN 23 DME and hold.

ATIS	HUNTINGTON APP CON	HUNTINGTON TOWER	GND CON	CLNC DEL
<b>125.2</b>	<b>119.75 270.1</b>	<b>118.5 270.1</b>	<b>121.9</b>	<b>118.05</b>



NE-4, 22 OCT 2009 to 19 NOV 2009

NE-4, 22 OCT 2009 to 19 NOV 2009



CATEGORY	A	B	C	D
S-ILS 30		1028-¾	200 (200-¾)	
S-LOC 30	1260-1	432 (500-1)	1260-1¼ 432 (500-1¼)	1260-1½ 432 (500-1½)
CIRCLING	1340-1	512 (600-1)	1340-1½ 512 (600-1½)	1420-2 592 (600-2)

# ILS or LOC RWY 30