

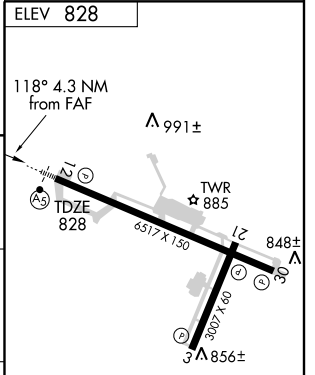
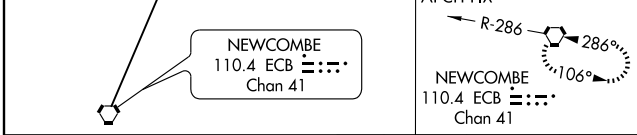
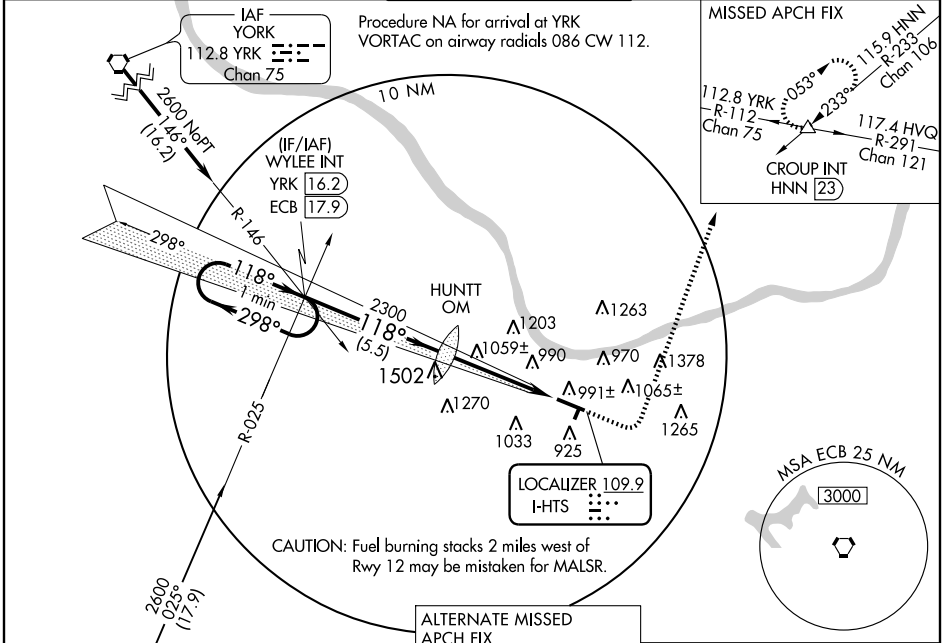
ILS or LOC RWY 12

HUNTINGTON / TRI-STATE/MILTON J. FERGUSON FIELD (HTS)

LOC I-HTS 109.9	APP CRS 118°	Rwy Idg TDZE Apt Elev	6517 828 828
---------------------------	------------------------	-----------------------------	---

When VGSB Inop, Circling Rwy 3 NA at night. *RVR 1800 authorized with the use of FD or AP or HUD to DA.	MALS 	MISSED APPROACH: Climb to 1700 then climbing left turn to 3000 via heading 020° and HNN VORTAC R-233 to CROUP Int/HNN 23 DME and hold.
	Procedure NA for arrival at YRK VORTAC on airway radials 086 CW 112.	

ATIS 125.2	HUNTINGTON APP CON 119.75 270.1	HUNTINGTON TOWER 118.5 270.1	GND CON 121.9	CLNC DEL 118.05
----------------------	---	--	-------------------------	---------------------------



CATEGORY	A	B	C	D
S-ILS 12	* 1028/24		200 (200-½)	
S-LOC 12	1320/24	492 (500-½)	1320/40 492 (500-¾)	1320/50 492 (500-1)
CIRCLING	1340-1	512 (600-1)	1340-1½ 512 (600-1½)	1420-2 592 (600-2)

REIL Rwy 30	FAF to MAP 4.3 NM					
HIRL Rwy 12-30	Knots	60	90	120	150	180
MIRL Rwy 3-21	Min:Sec	4:18	2:52	2:09	1:43	1:26

ILS or LOC RWY 12

NE-4, 22 OCT 2009 to 19 NOV 2009

NE-4, 22 OCT 2009 to 19 NOV 2009