

GREYBULL, WYOMING

AL-531 (FAA)

# RNAV (GPS)-A

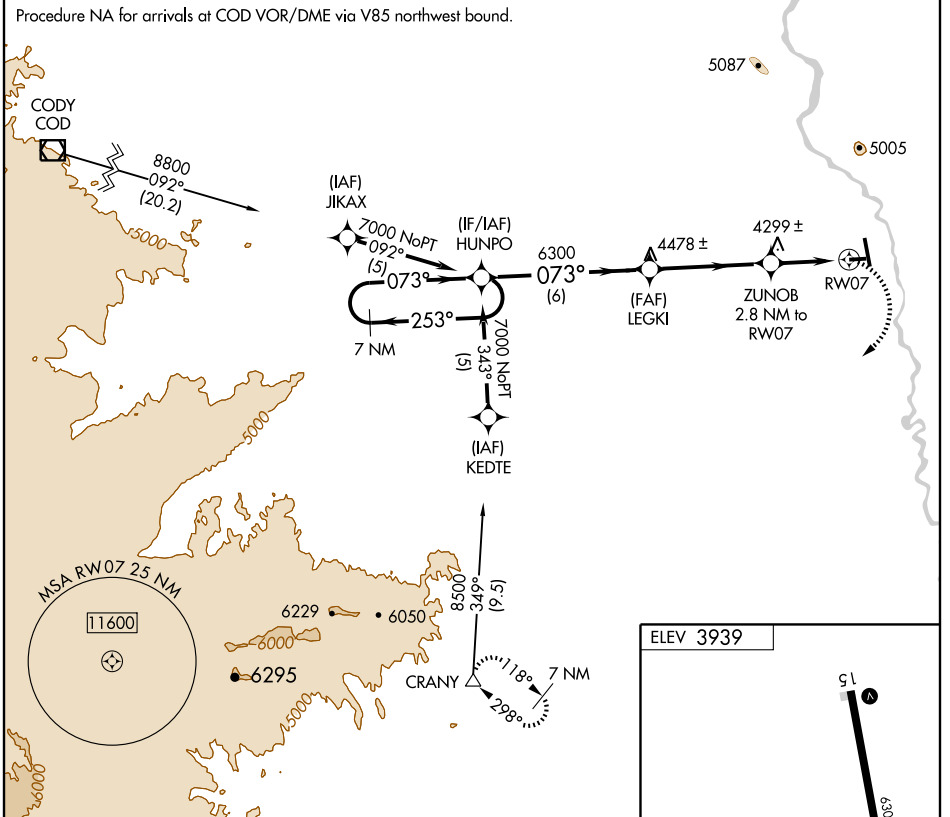
GREYBULL/ SOUTH BIG HORN COUNTY (GEY)

APP CRS <b>073°</b>	Rwy Idg TDZE Apt Elev <b>N/A</b> <b>N/A</b> <b>3939</b>
------------------------	--

**⚠** DME/DME RNP -0.3 NA.  
**⚠** If local altimeter setting not received, use Worland Muni altimeter setting and increase all MDAs 120 feet.  
 Circling to Rwy 7/25 NA at night.

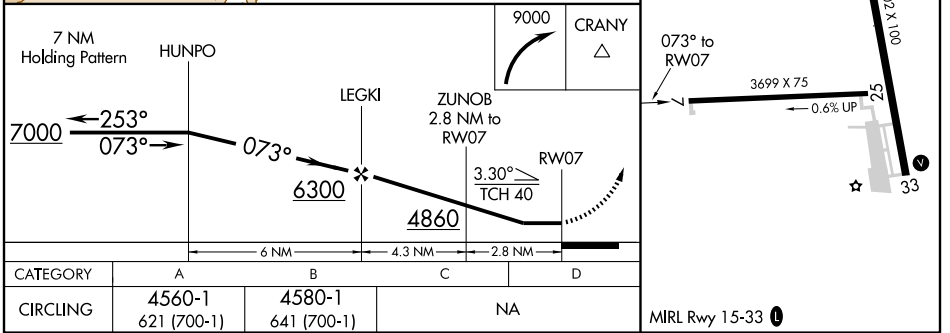
MISSED APPROACH: Climbing right turn to 9000 direct CRANY and hold, continue climb-in-hold to 9000.

ASOS <b>135.325</b>	SALT LAKE CENTER <b>133.25 285.6</b>	CTAF <b>122.9</b>
------------------------	---	----------------------



NW-1, 22 OCT 2009 to 19 NOV 2009

NW-1, 22 OCT 2009 to 19 NOV 2009



GREYBULL, WYOMING  
Orig 09295

GREYBULL/ SOUTH BIG HORN COUNTY (GEY)

44°31'N-108°05'W

# RNAV (GPS)-A