

GREYBULL, WYOMING

AL-531 (FAA)

# RNAV (GPS) RWY 33

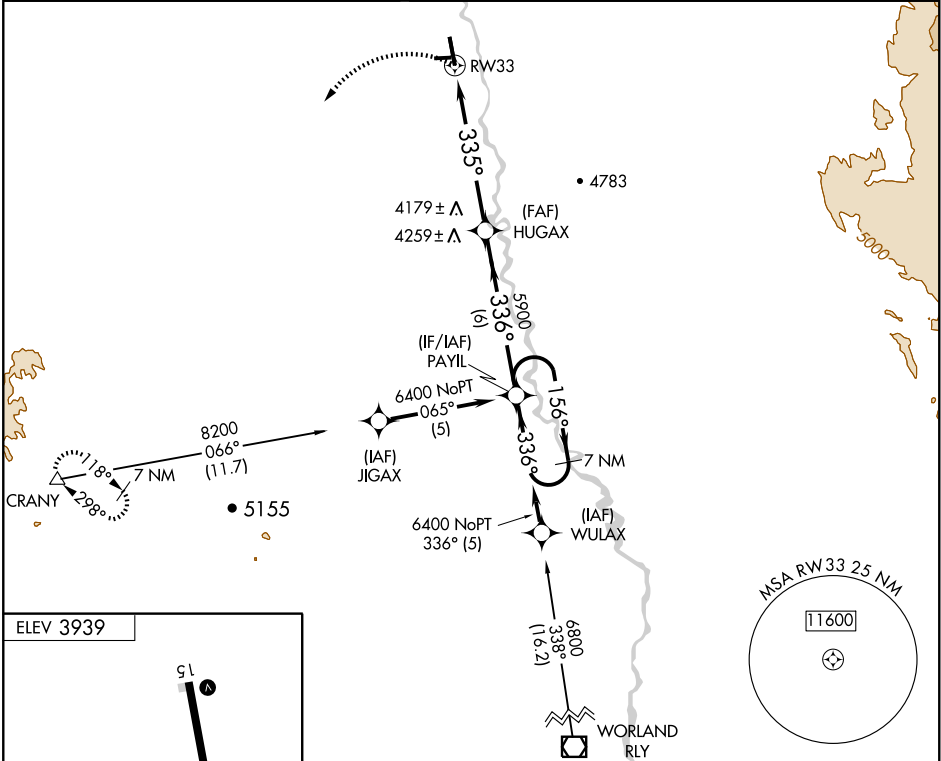
GREYBULL/SOUTH BIG HORN COUNTY (GEY)

APP CRS	Rwy Idg	<b>6302</b>
<b>335°</b>	TDZE	<b>3913</b>
	Apt Elev	<b>3939</b>

**⚠** DME/DME RNP-0.3 NA.  
**⚠** If local altimeter setting not received, use Worland Muni altimeter setting and increase all MDAs 120 feet.  
 VDP NA when using Worland altimeter setting.  
 Circling to Rwy 7/25 NA at night.

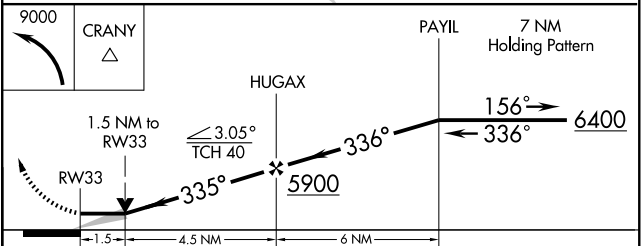
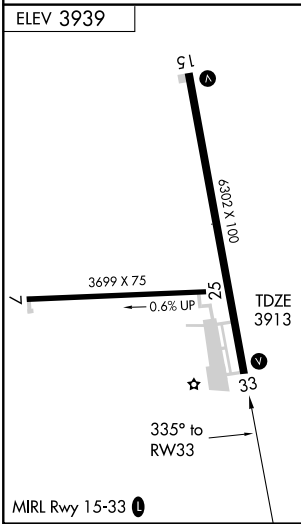
**MISSED APPROACH:** Climbing left turn to 9000 direct CRANY and hold, continue climb-in-hold to 9000.

ASOS <b>135.325</b>	SALT LAKE CENTER <b>133.25 285.6</b>	CTAF <b>122.9</b> <b>Ⓛ</b>
------------------------	---	-------------------------------



NW-1, 22 OCT 2009 to 19 NOV 2009

NW-1, 22 OCT 2009 to 19 NOV 2009



CATEGORY	A	B	C	D
LNAV MDA	4440-1	527 (600-1)	4440-1½ 527 (600-1½)	4440-1¾ 527 (600-1¾)
CIRCLING	4500-1 561 (600-1)	4580-1 641 (700-1)	4660-2 721 (800-2)	5040-3 1101 (1200-3)

GREYBULL, WYOMING  
 Orig 09295

GREYBULL/SOUTH BIG HORN COUNTY (GEY)  
 44°31'N-108°05'W  
**RNAV (GPS) RWY 33**