

GREYBULL, WYOMING

AL-531 (FAA)

NDB GEY 275	APP CRS 318°	Rwy Idg 6302 TDZE 3913 Apt Elev 3939
-----------------------	------------------------	--

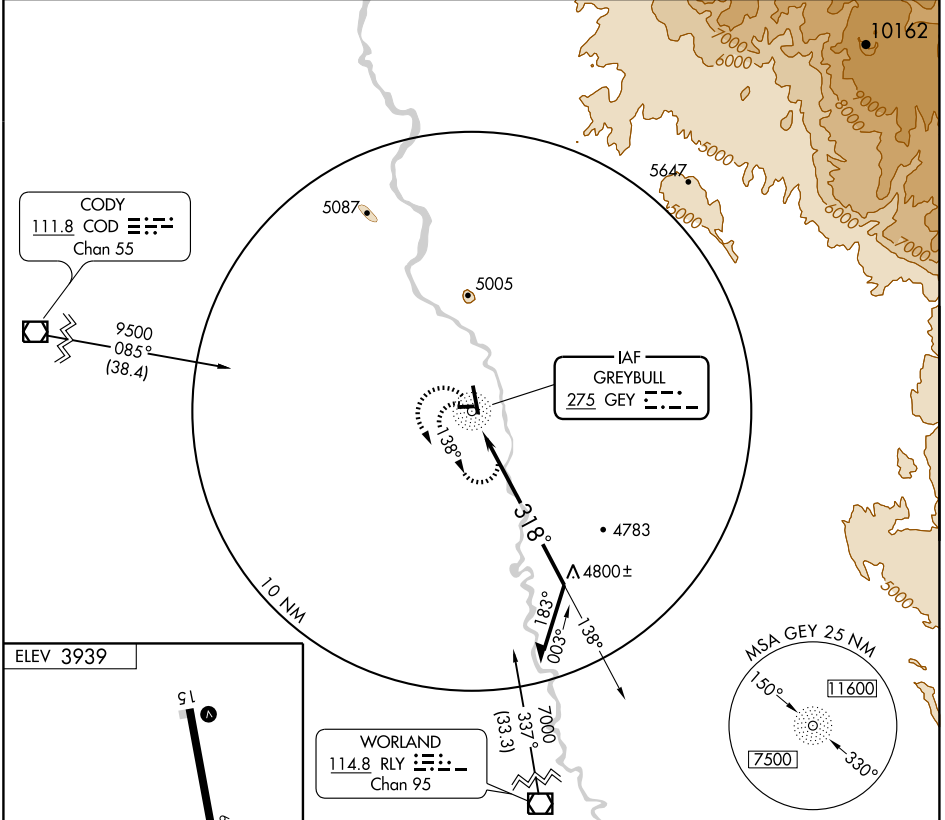
NDB RWY 33

GREYBULL/SOUTH BIG HORN COUNTY (GEY)

▽ If local altimeter setting not received, use Worland altimeter setting and increase all MDAs 120 feet.
△ NA Visibility reduction by helicopter NA.

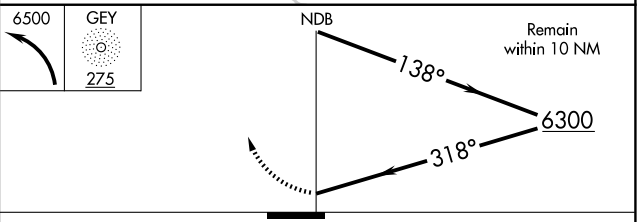
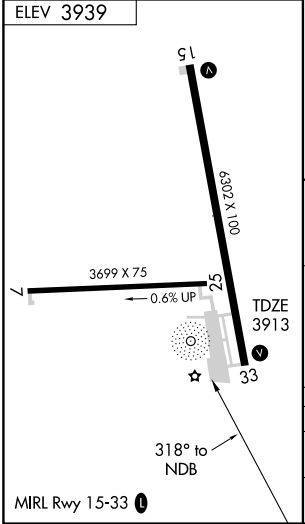
MISSED APPROACH: Climbing left turn to 6500 in GEY NDB holding pattern.

ASOS 135.325	SALT LAKE CENTER 133.25 285.6	CTAF 122.9
------------------------	---	----------------------



NW-1, 22 OCT 2009 to 19 NOV 2009

NW-1, 22 OCT 2009 to 19 NOV 2009



CATEGORY	A	B	C	D
S-33	5200-1¼ 1287 (1300-1¼)	5200-1½ 1287 (1300-1½)	5200-3	1287 (1300-3)
CIRCLING	5200-1¼ 1261 (1300-1¼)	5200-1½ 1261 (1300-1½)	5200-3	1261 (1300-3)

GREYBULL, WYOMING
Amdt 2 09295

GREYBULL/ SOUTH BIG HORN COUNTY (GEY)
44°31'N-108°05'W
NDB RWY 33