

# RNAV (GPS) RWY 30

PALM SPRINGS/ JACQUELINE COCHRAN RGNL (TRM)

APP CRS <b>302°</b>	Rwy Idg <b>4995</b>
	TDZE <b>-121</b>
	Apt Elev <b>-114</b>

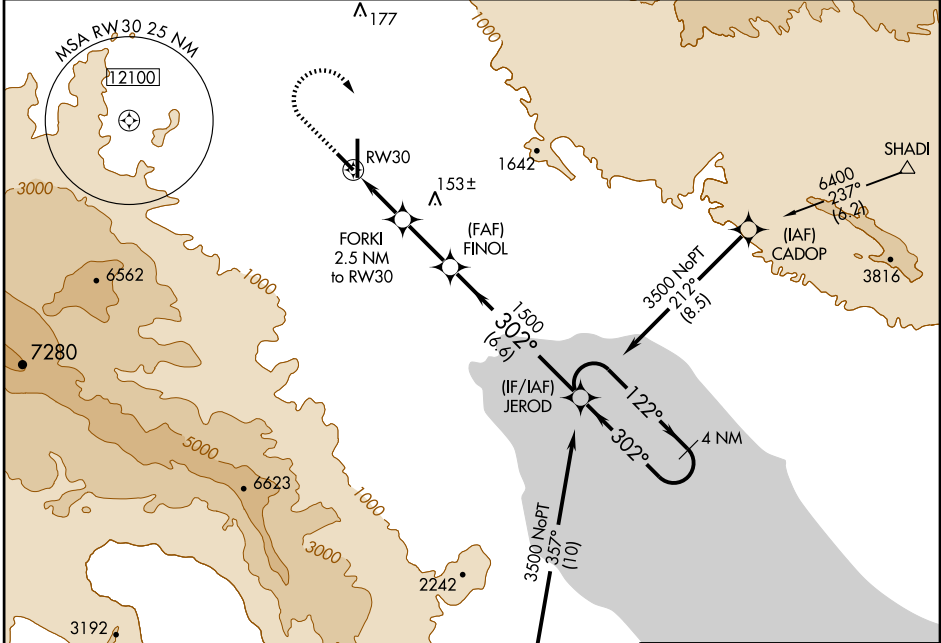
**NA** GPS or RNP- 0.3 required. DME/DME RNP- 0.3 NA.

**MISSED APPROACH:** Climb to 1000 then climbing right turn to 3500 direct JEROD WP and hold.

ASOS  
**118.325**

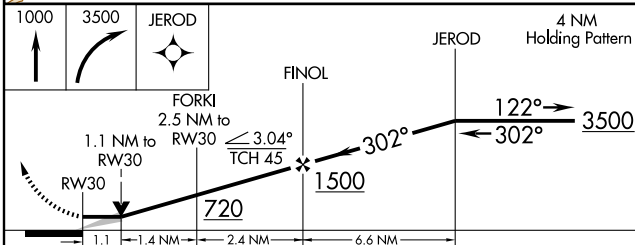
SOCAL APP CON \*  
**135.275 251.1**

UNICOM  
**123.0 (CTAF)**

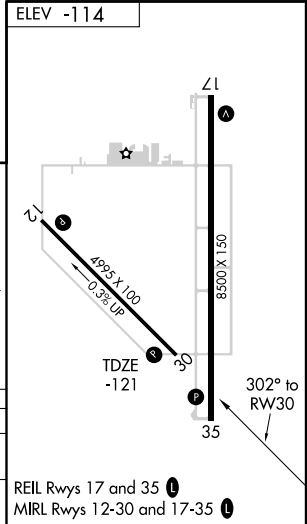


SW-3, 22 OCT 2009 to 19 NOV 2009

SW-3, 22 OCT 2009 to 19 NOV 2009



CATEGORY	A	B	C	D
LNVA MDA	260-1	374 (400-1)		260-1½ 374 (400-1½)
CIRCLING	320-1 434 (500-1)	340-1 454 (500-1)	340-1½ 454 (500-1½)	500-2 614 (700-2)



# RNAV (GPS) RWY 30