

# VOR RWY 24

PHILADELPHIA / NORTHEAST PHILADELPHIA (PNE)

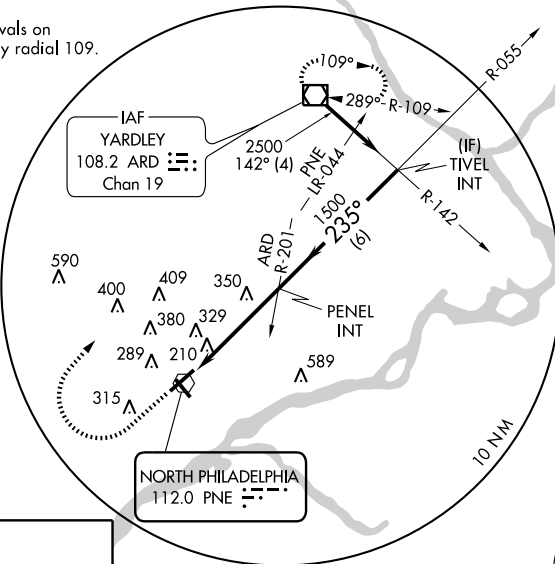
VOR PNE <b>112.0</b>	APP CRS <b>235°</b>	Rwy Idg TDZE Apt Elev	<b>7000</b> <b>116</b> <b>121</b>
-------------------------	------------------------	-----------------------------	---

▼ When local altimeter setting not received, use Philadelphia Intl altimeter setting and increase all MDA 60 feet and S-24 Cats. C/D visibility ¼ mile. When VGSI inop, Circling Rwy 15, 33 NA at night.

MALSR MISSED APPROACH: Climb to 800, then climbing right turn to 3000 direct ARD VOR/DME and hold.

ATIS <b>121.15</b>	PHILADELPHIA APP CON <b>123.8 291.7</b>	NORTHEAST PHILADELPHIA TOWER * <b>126.9 (CTAF) 278.8</b>	GND CON <b>121.7</b>	CLNC DEL <b>127.25</b>
-----------------------	--	---	-------------------------	---------------------------

Procedure NA for arrivals on ARD VOR/DME airway radial 109.



NE-4, 22 OCT 2009 to 19 NOV 2009

NE-4, 22 OCT 2009 to 19 NOV 2009

ELEV 121

REIL Rwys 6, 15 and 33  
MIRL Rwy 15-33  
HIRL Rwy 6-24

800	3000	ARD	108.2
-----	------	-----	-------

CATEGORY	A	B	C	D
S-24	600-½ 484 (500-½)		600-¾ 484 (500-¾)	600-1 484 (500-1)
CIRCLING	640-1	519 (600-1)	640-1½ 519 (600-1½)	700-2 579 (600-2)