

RNAV (GPS) RWY 15

PHILADELPHIA / NORTHEAST PHILADELPHIA (PNE)

APP CRS 153°	Rwy Idg 5000
	TDZE 121
	Apt Elev 121

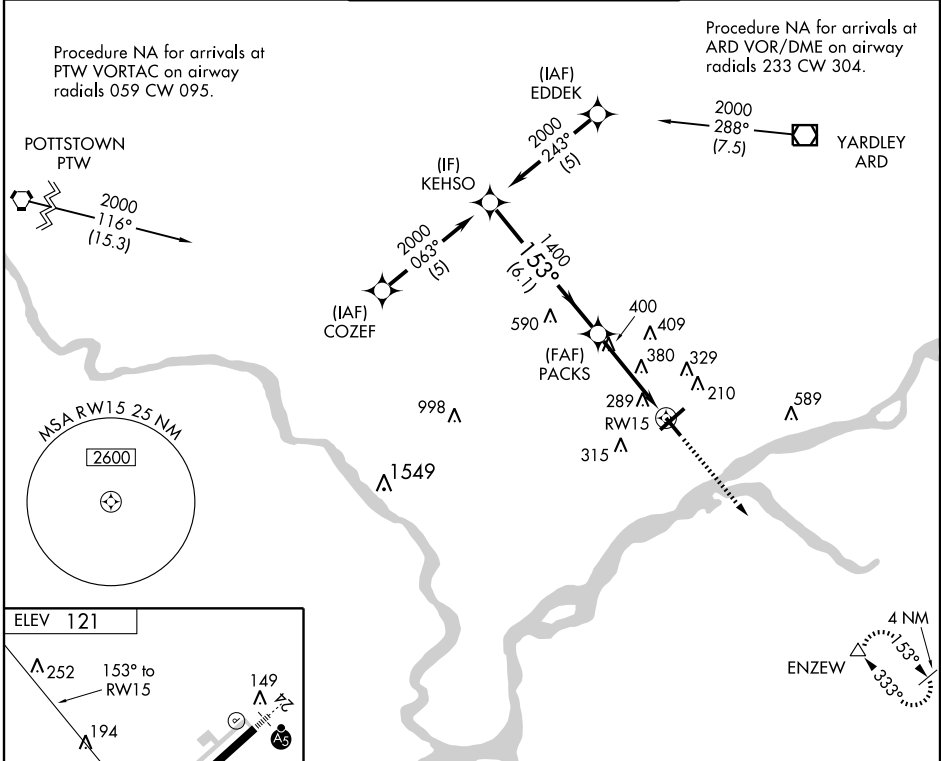
- ▼ DME/DME RNP-0.3 NA.
- When local altimeter setting not received, use Philadelphia Intl altimeter setting and increase all MDA 60 feet.
- ▲ When VGSI inop, Straight-in/Circling Rwy 15 procedure NA at night. When VGSI inop, Circling Rwy 33 NA at night.

MISSED APPROACH: Climb to 2000 direct ENZEW and hold.

ATIS 121.15	PHILADELPHIA APP CON 123.8 291.7	NORTHEAST PHILADELPHIA TOWER * 126.9 (CTAF) 278.8	GND CON 121.7	CLNC DEL 127.25
-----------------------	--------------------------------------------	-------------------------------------------------------------	-------------------------	---------------------------

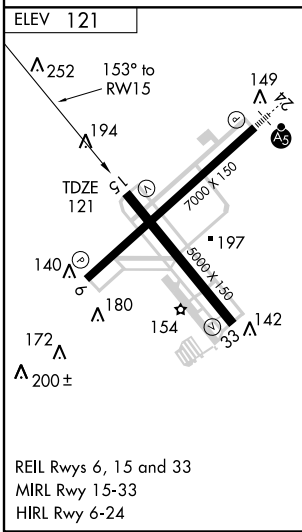
Procedure NA for arrivals at PTW VORTAC on airway radials 059 CW 095.

Procedure NA for arrivals at ARD VOR/DME on airway radials 233 CW 304.

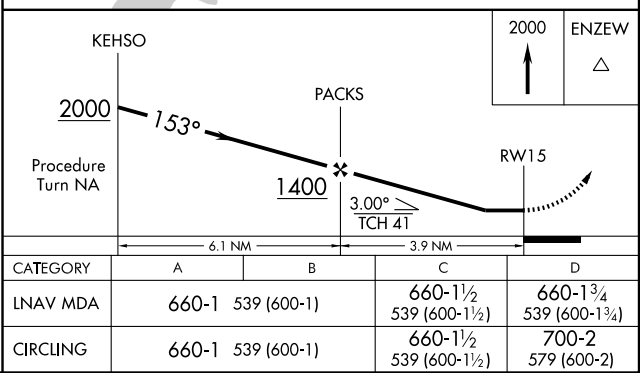


NE-4, 22 OCT 2009 to 19 NOV 2009

NE-4, 22 OCT 2009 to 19 NOV 2009



REIL Rwy 6, 15 and 33
MIRL Rwy 15-33
HIRL Rwy 6-24



CATEGORY	A	B	C	D
LNAV MDA	660-1	539 (600-1)	660-1½ 539 (600-1½)	660-1¾ 539 (600-1¾)
CIRCLING	660-1	539 (600-1)	660-1½ 539 (600-1½)	700-2 579 (600-2)