

# LOC BC RWY 6

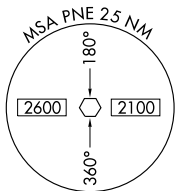
PHILADELPHIA / NORTHEAST PHILADELPHIA (PNE)

LOC I-PNE <b>111.1</b>	APP CRS <b>060°</b>	Rwy Idg <b>7000</b>
		TDZE <b>116</b>
		Apt Elev <b>121</b>

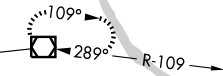
- ▼ When local altimeter setting not received, use Philadelphia Intl altimeter setting and increase all MDA 60 feet and S-6 Cats. C/D visibility 1/2 mile.
- ▲ When VGSI inop, Circling Rwy 15, 33 NA at night. Radar Required.

MISSED APPROACH: Climb to 1000, then climbing left turn to 3000 direct ARD VOR/DME and hold.

ATIS <b>121.15</b>	PHILADELPHIA APP CON <b>123.8 291.7</b>	NORTHEAST PHILADELPHIA TOWER * <b>126.9 (CTAF) 278.8</b>	GND CON <b>121.7</b>	CLNC DEL <b>127.25</b>
-----------------------	--	---	-------------------------	---------------------------

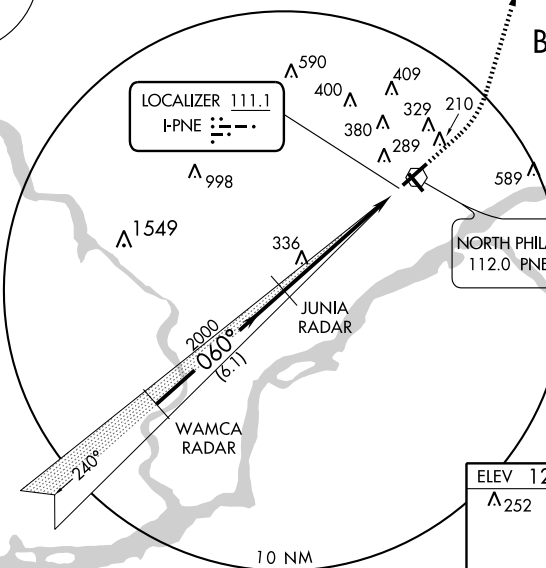


YARDLEY  
108.2 ARD :  
Chan 19



## RADAR REQUIRED

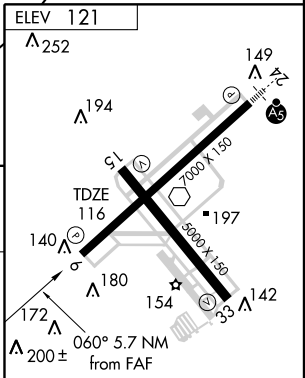
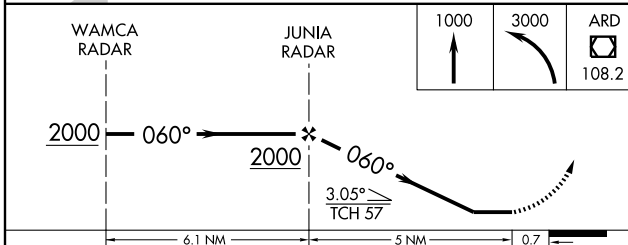
## BACK COURSE



NORTH PHILADELPHIA  
112.0 PNE

NE-4, 22 OCT 2009 to 19 NOV 2009

NE-4, 22 OCT 2009 to 19 NOV 2009



CATEGORY	A	B	C	D
S-6	600-1 484 (500-1)		600-1½ 484 (500-1¼)	600-1½ 484 (500-1½)
CIRCLING	640-1 519 (600-1)		640-1½ 519 (600-1½)	700-2 579 (600-2)

REIL Rwy 6, 15 and 33  
MIRL Rwy 15-33  
HIRL Rwy 6-24

FAF to MAP 5 NM

Knots	60	90	120	150	180
Min:Sec	5:00	3:20	2:30	2:00	1:40

# LOC BC RWY 6