

VOR/DME COE 108.8 Chan 25	APP CRS 344°	Rwy Idg TDZE Apt Elev	5400 2311 2320
--	------------------------	-----------------------------	---

VOR/DME RWY 1

COEUR D'ALENE-PAPPY BOYINGTON FIELD (COE)

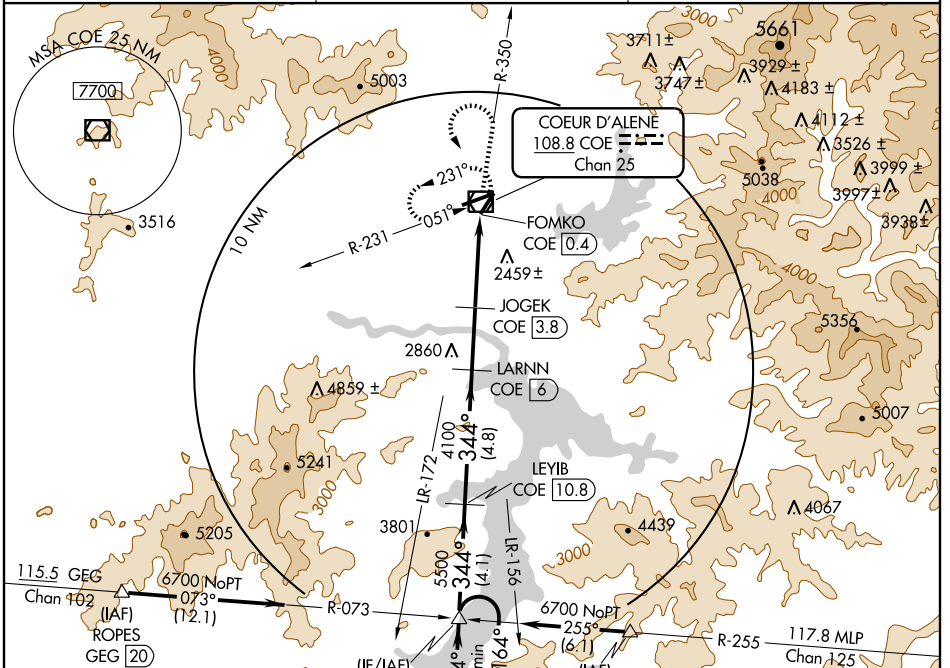
⚠ Visibility reduction by helicopters NA. When local altimeter setting not received, use Spokane Intl altimeter setting and increase all MDA 80 feet and S-1 and circling Cat C visibility 1/4 mile.

MISSED APPROACH: Climb to 6000 via COE R-350 outbound then climbing left turn to 6500 via COE R-350 inbound to COE VOR/DME and hold.

AWOS-3
135.075

SPOKANE APP CON
132.1 263.0

UNICOM
122.8 (CTAF)

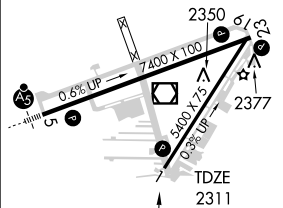
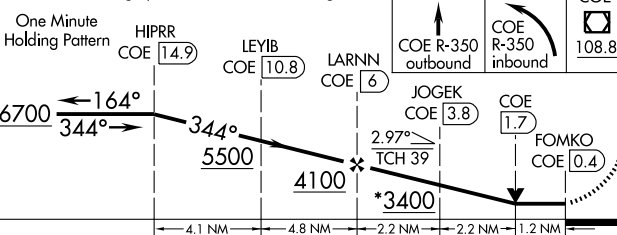


NW-1, 22 OCT 2009 to 19 NOV 2009

NW-1, 22 OCT 2009 to 19 NOV 2009

ELEV 2320
MIRL Rwy 1-19
HIRL Rwy 5-23
REIL Rwys 1 and 23

*3480 when using Spokane Intl altimeter setting.



CATEGORY	A	B	C	D
S-1	2740-1	429 (500-1)	2740-1 1/4 429 (500-1 1/4)	NA
CIRCLING	2740-1 420 (500-1)	2860-1 540 (600-1)	2880-1 1/2 560 (600-1 1/2)	NA

344° 5.6 NM
from FAF