



VOR RWY 5

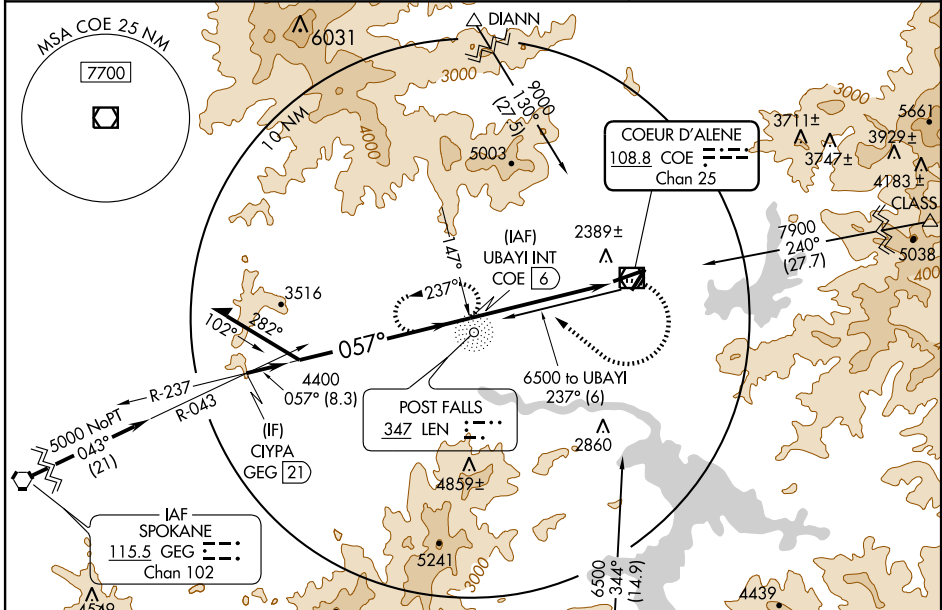
COEUR D'ALENE-PAPPY BOYINGTON FIELD (COE)

VOR/DME COE	APP CRS	Rwy Idg	7400
108.8	057°	TDZE	2290
Chan 25		Apt Elev	2320

⚠ When local altimeter setting not received, use Spokane Intl altimeter setting and increase all MDA 80 feet and circling Cat C visibility to 1 3/4 miles.
⚠ VDP NA when using Spokane Intl altimeter setting.
 ADF or DME required.

MALSR

MISSED APPROACH: Climbing right turn to 6500 via heading 290° and COE R-237 outbound then right turn via COE R-237 inbound to UBAYI INT/COE 6 DME and hold.

AWOS-3 135.075	SPOKANE APP CON 132.1 263.0	UNICOM 122.8 (CTAF) 
--------------------------	---------------------------------------	---

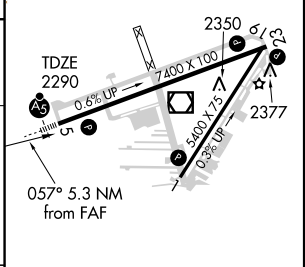
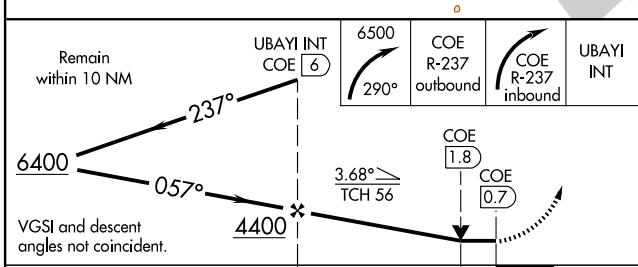


NW-1, 22 OCT 2009 to 19 NOV 2009

NW-1, 22 OCT 2009 to 19 NOV 2009

ELEV 2320
MIRL Rwy 1-19 
HIRL Rwy 5-23 
REIL Rwys 1 and 23 

ADF or DME REQUIRED



CATEGORY	A	B	C	D
S-5	2700-1/2	410 (400-1/2)	2700-3/4 410 (400-3/4)	NA
CIRCLING	2720-1 400 (400-1)	2860-1 540 (600-1)	2880-1 1/2 560 (600-1 1/2)	NA

FAF to MAP 5.3 NM					
Knots	60	90	120	150	180
Min:Sec	5:18	3:32	2:39	2:07	1:46