

NDB RWY 5

COEUR D'ALENE-PAPPY BOYINGTON FIELD (COE)

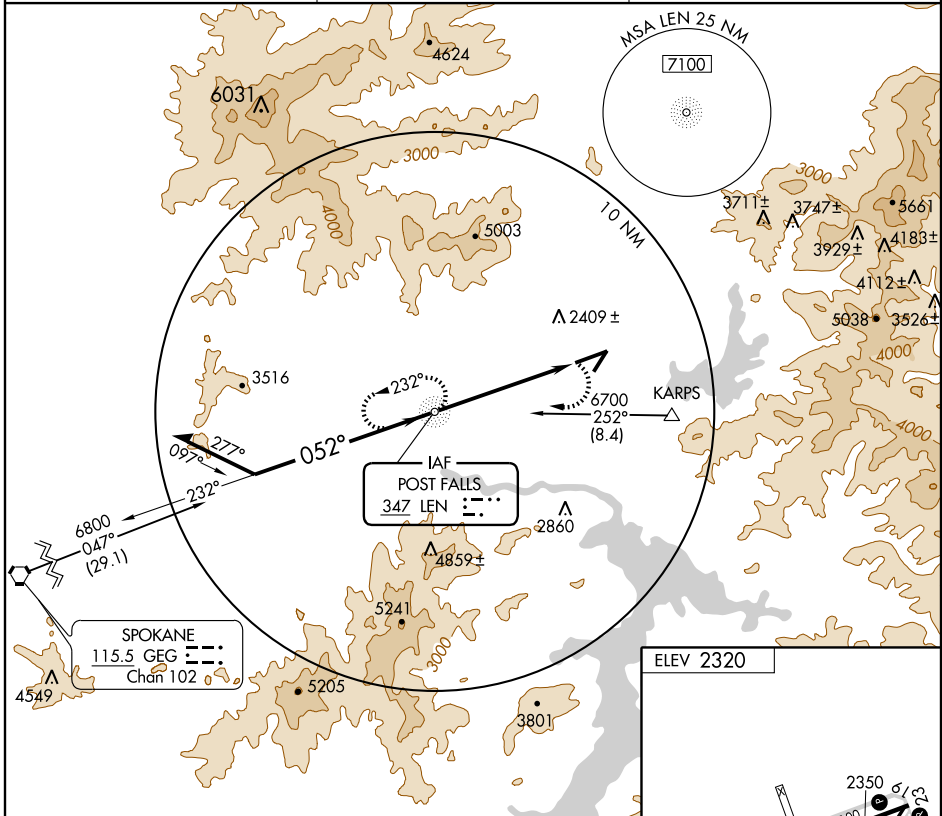
NDB LEN 347	APP CRS 052°	Rwy Idg 7400
		TDZE 2290
		Apt Elev 2320

⚠ When local altimeter setting not received, use Spokane
⚠ Init altimeter setting and increase all MDA 80 feet and
 S-5 and circling Cat C visibility ¼ mile.



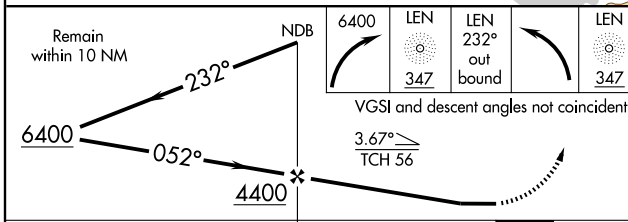
MISSED APPROACH: Climbing right turn to 6400 direct
 LEN NDB and via LEN NDB bearing 232° outbound
 then left turn direct LEN NDB and hold.

AWOS-3 135.075	SPOKANE APP CON 132.1 263.0	UNICOM 122.8 (CTAF)
--------------------------	---------------------------------------	-------------------------------



NW-1, 22 OCT 2009 to 19 NOV 2009

NW-1, 22 OCT 2009 to 19 NOV 2009



CATEGORY	A		B		C		D	
	2780-¾ 490 (500-¾)		2900-¾ 610 (600-¾)		2920-1½ 630 (600-1½)		NA	
CIRCLING	2920-1		600 (600-1)		2920-1½ 600 (600-1½)		NA	

MIRL Rwy 1-19	1
HIRL Rwy 5-23	1
REL Rwys 1 and 23	1
FAF to MAP 5.3 NM	
Knots	60 90 120 150 180
Min:Sec	5:18 3:32 2:39 2:07 1:46