


# ILS or LOC/DME RWY 5

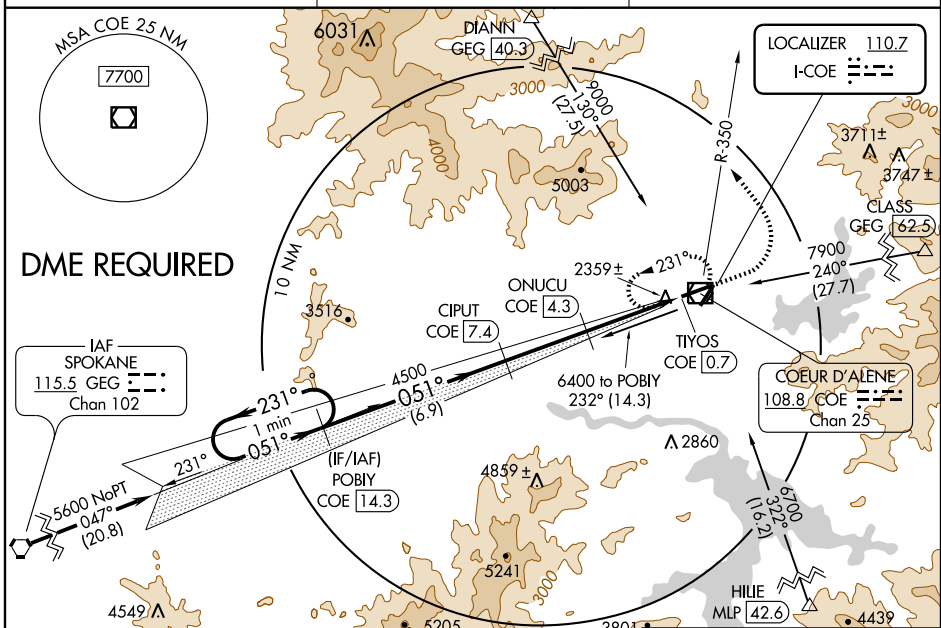
COEUR D'ALENE-PAPPY BOYINGTON FIELD (COE)

LOC I-COE <b>110.7</b>	APP CRS <b>051°</b>	Rwy Idg TDZE Apt Elev	<b>7400</b> <b>2290</b> <b>2320</b>
---------------------------	------------------------	-----------------------------	-------------------------------------------

**⚠** Simultaneous reception of I-COE localizer and COE DME required. Autopilot coupled approach NA below 2795. When local altimeter setting not received, use Spokane Intl altimeter setting and increase all DA/MDA 80 feet and all visibilities ¼ mile.

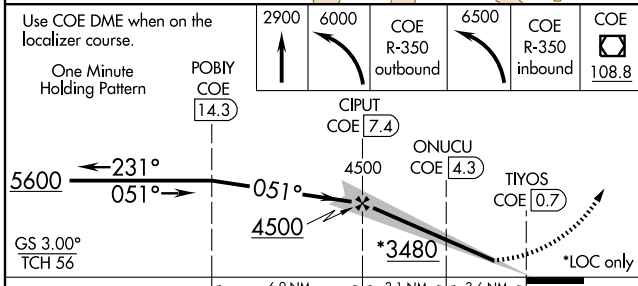
**MALSR**  
  
 MISSED APPROACH: Climb to 2900 then climbing left turn to 6000 via COE R-350 outbound then climbing left turn to 6500 via COE R-350 inbound to COE VOR/DME and hold.

AWOS-3 <b>135.075</b>	SPOKANE APP CON <b>132.1 263.0</b>	UNICOM <b>122.8 (CTAF)</b>
--------------------------	---------------------------------------	-------------------------------



NW-1, 22 OCT 2009 to 19 NOV 2009

Procedure NA for arrivals at GEG VORTAC via airway radials 006 CW 073.



MIRL Rwy 1-19  
HIRL Rwy 5-23  
REIL Rws 1 and 23