

RNAV (GPS) RWY 6

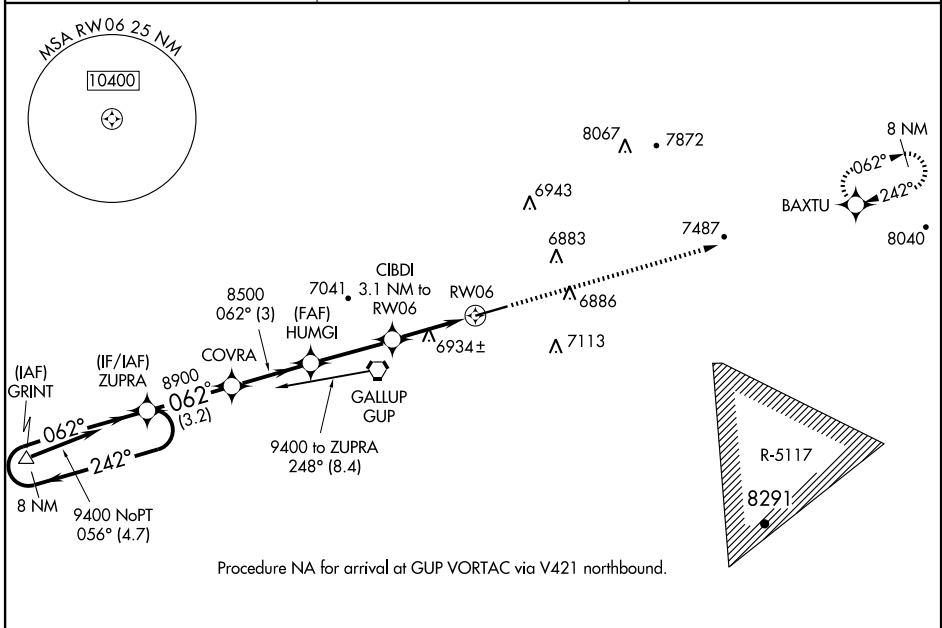
GALLUP MUNI (GUP)

WAAS CH 82099 W06A	APP CRS 062°	Rwy Idg TDZE Apt Elev	7316 6465 6472
---------------------------------	------------------------	-----------------------------	---

⚠ DME/DME RNP-0.3 NA.
⚠ VDP NA with Window Rock altimeter setting.
 If local altimeter setting not received, use Window Rock altimeter setting and increase all DAs/MDAs 80 feet.

MISSED APPROACH: Climb to 9500 direct BAXTU and hold.

ASOS 118.375	ALBUQUERQUE RADIO 122.1R	UNICOM 122.95 (CTAF) 0
------------------------	------------------------------------	----------------------------------



SW-1, 22 OCT 2009 to 19 NOV 2009

SW-1, 22 OCT 2009 to 19 NOV 2009

8 NM Holding Pattern		ZUPRA	COVRA	HUMGI	CIBDI	9500	BAXTU
9400 ← 242° / 062° →		8900	8500	7500	3.1 NM to RW06	↑	⬠
GS 3.00° TCH 45		3.2 NM	3 NM	3 NM	0.7	*RNAV only	
CATEGORY	A	B	C	D			
LPV DA	6759-1				294 (300-1)		
LNAV/VNAV DA	NA						
LNAV MDA	7260-1 795 (800-1)	7260-1¼ 795 (800-1¼)	7260-2¼ 795 (800-2¼)	7260-2½ 795 (800-2½)			
CIRCLING	7260-1 788 (800-1)	7260-1¼ 788 (800-1¼)	7260-2¼ 788 (800-2¼)	7360-3 888 (900-3)			
						REIL Rwy 24 0 MIRL Rwy 6-24 0	