

# ILS or LOC RWY 16

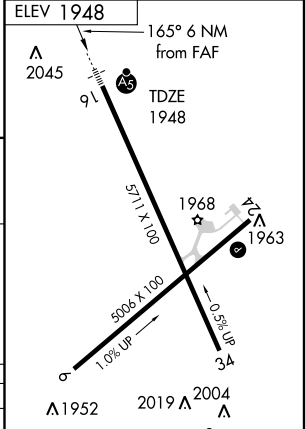
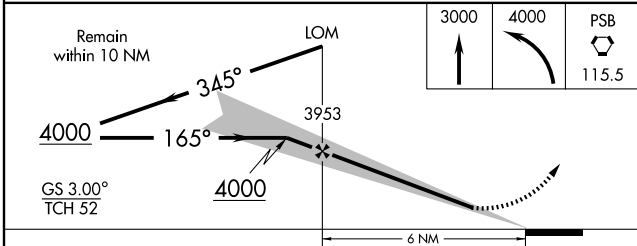
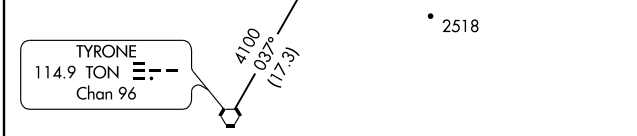
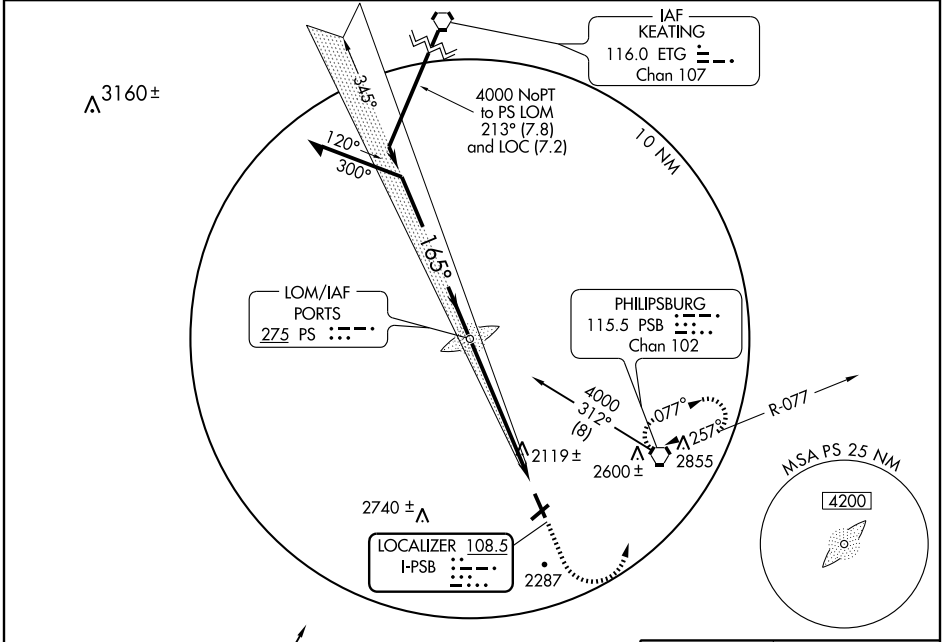
PHILIPSBURG / MID-STATE (PSB)

LOC I-PSB <b>108.5</b>	APP CRS <b>165°</b>	Rwy Idg TDZE Apt Elev	<b>5711</b> <b>1948</b> <b>1948</b>
---------------------------	------------------------	-----------------------------	---

**▼** Use University Park altimeter setting; when not received, procedure not authorized.  
**▲ NA** Inoperative table does not apply to S-ILS 16 Cats A, B, and C. Inoperative table does not apply to S-LOC 16 Cats A and B.

**MALSR** MISSED APPROACH: Climb to 3000 then climbing left turn to 4000 direct PSB VORTAC and hold.

AWOS-3 <b>127.525</b>	NEW YORK CENTER <b>134.8 338.3</b>	CTAF <b>122.9</b>
--------------------------	---------------------------------------	----------------------



CATEGORY	A	B	C	D
S-ILS 16	2325-1 377 (400-1)			
S-LOC 16	2500-1 552 (600-1)		2500-1¼ 552 (600-1¼)	
CIRCLING	2620-1 672 (700-1)	2660-1 712 (800-1)	2740-2¼ 792 (800-2¼)	2760-2¾ 812 (900-2¾)

MIRL Rws 6-24 and 16-34  
FAF to MAP 6 NM

Knots	60	90	120	150	180
Min:Sec	6:00	4:00	3:00	2:24	2:00

NE-4, 22 OCT 2009 to 19 NOV 2009

NE-4, 22 OCT 2009 to 19 NOV 2009