


WAAS CH 69611 W17A	APP CRS 168°	Rwy ldg TDZE Apt Elev	5002 1135 1166
--	------------------------	-----------------------------	---

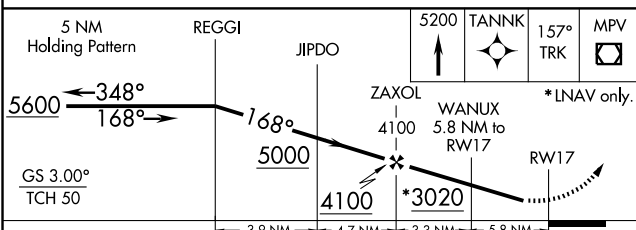
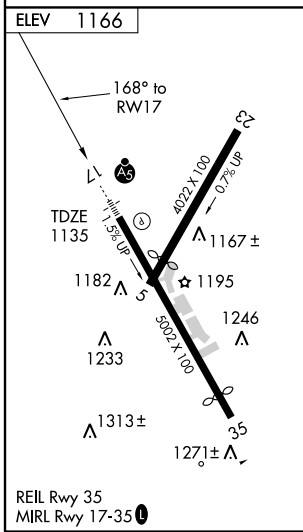
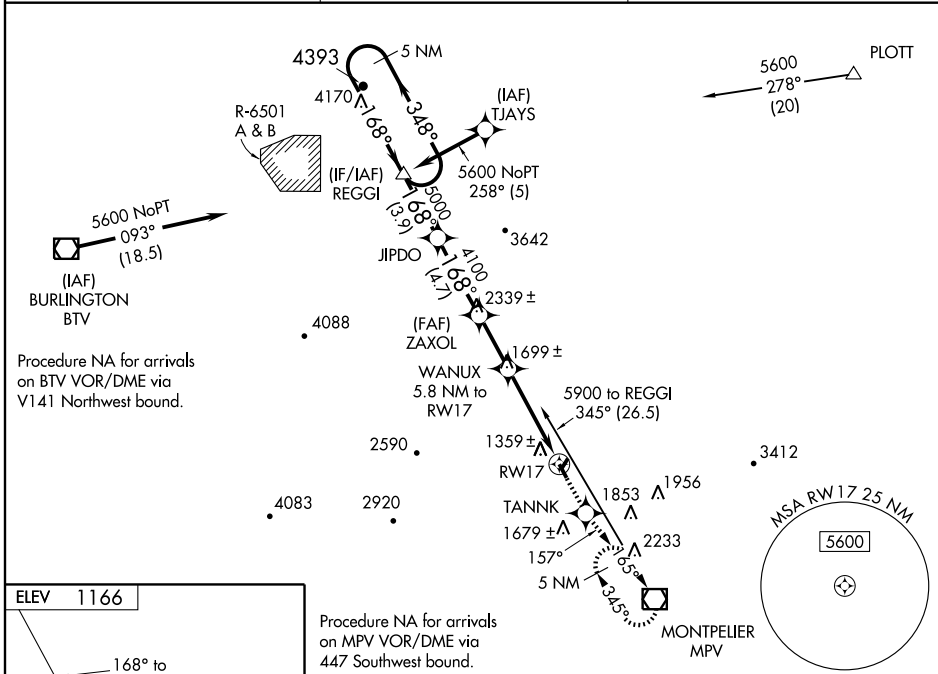
RNAV (GPS) RWY 17

BARRE/EDWARD F. KNAPP STATE (MPV)

⚠ Inoperative table does not apply to LNAV Cats A and B. For uncompensated Baro-VNAV systems, LNAV/VNAV NA below -17°C (2°F) or above 47°C (116°F). DME/DME RNP-0.3 NA. Visibility reduction by helicopters NA. For inoperative MALSR, when using Morrisville altimeter setting, increase LPV all Cats visibility to 3 and LNAV visibility Cat A to 1½. When local altimeter setting not received, use Morrisville altimeter setting and increase LPV DA to 1970 and all MDA 520 feet, LPV all Cats visibility 1½, LNAV Cat C 1½ and D 1¼, Circling Cats A and B ¼ mile and Cat C ¾ mile. LNAV/VNAV NA.

MALSR

MISSED APPROACH:
 Climb to 5200 direct TANNK and via 157° track to MPV VOR/DME and hold, continue climb-in-hold to 5200.

ASOS 132.675	BOSTON CENTER 135.7 282.2	UNICOM 122.8 (CTAF) 0
------------------------	-------------------------------------	---------------------------------



CATEGORY	A	B	C	D
LPV DA		1465-1	330 (300-1)	
LNAV/VNAV DA		1768-2	633 (700-2)	
LNAV MDA	1680-1	545 (600-1)		1680-1¼ 545 (600-1¼)
CIRCLING	1940-1 774 (800-1)	1940-1¼ 774 (800-1¼)	1940-2¼ 774 (800-2¼)	2480-3 1314 (1400-3)

NE-1, 22 OCT 2009 to 19 NOV 2009

NE-1, 22 OCT 2009 to 19 NOV 2009