

LOC/DME I-MPV 108.7 Chan 24	APP CRS 168°	Rwy Idg TDZE Apt Elev	5002 1135 1165
--	------------------------	-----------------------------	---

ILS or LOC RWY 17

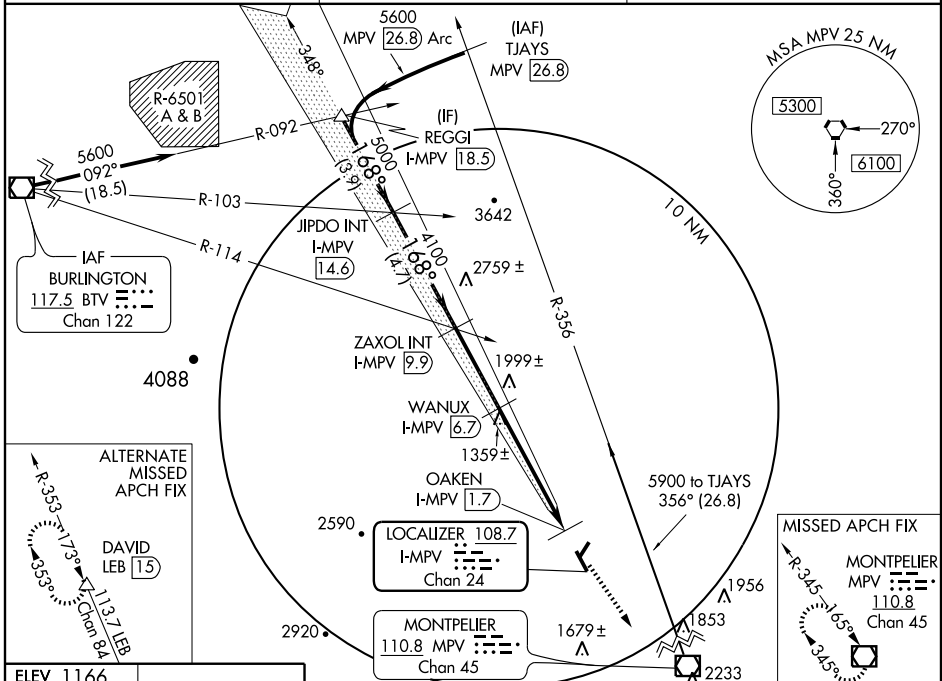
BARRE/ EDWARD F. KNAPP STATE (MPV)

⚠ Inoperative table does not apply to S-LOC 17 Cats A and B.
⚠ Inoperative table does not apply to WANUX Fix Minimums
 S-LOC 17 Cats A and B. Visibility reduction by helicopters NA.



MISSED APPROACH: Climb to 5200
 direct MPV VOR/DME and hold,
 continue climb-in-hold to 5200.

ASOS 132.675	BOSTON CENTER 135.7 282.2	UNICOM 122.8 (CTAF) 0
------------------------	-------------------------------------	---------------------------------



NE-1, 22 OCT 2009 to 19 NOV 2009

NE-1, 22 OCT 2009 to 19 NOV 2009

ELEV 1166

REIL Rwy 35
 MIRL Rwy 17-35

FAF to MAP 8.2 NM

Knots	60	90	120	150	180
Min:Sec	8:12	5:28	4:06	3:17	2:44

Procedure Turn NA

REGGI I-MPV 18.5
 JIPDO I-MPV 14.6
 ZAXOL I-MPV 9.9
 WANUX I-MPV 6.7
 OAKEN I-MPV 1.7

***LOC only** 5200 MPV 110.8

GS 3.00° TCH 50

Use I-MPV DME when on Localizer course.

5600 5000 4100 3000

3.9 NM 4.7 NM 3.3 NM 5 NM 0.8 NM

CATEGORY	A	B	C	D
S-ILS 17	1435-1 300 (300-1)			
S-LOC 17	3000-1¼ 1865 (1900-1¼)	3000-1½ 1865 (1900-1½)	3000-2½ 1865 (1900-2½)	1865 (1900-2½)
CIRCLING	3000-1¼ 1834 (1900-1¼)	3000-1½ 1834 (1900-1½)	3000-3	1834 (1900-3)
WANUX FIX MINIMUMS				
S-LOC 17	1780-1	645 (700-1)	1780-1¼ 645 (700-1¼)	1780-1½ 645 (700-1½)
CIRCLING	1940-1 774 (800-1)	1940-1¼ 774 (800-1¼)	1940-2¼ 774 (800-2¼)	2480-3 1314 (1400-3)