

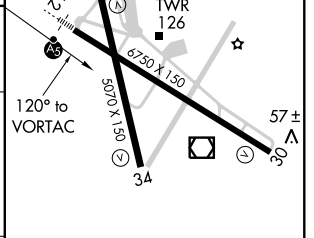
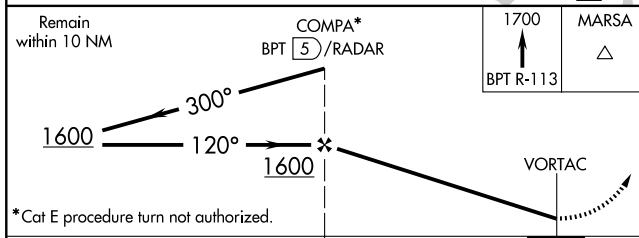
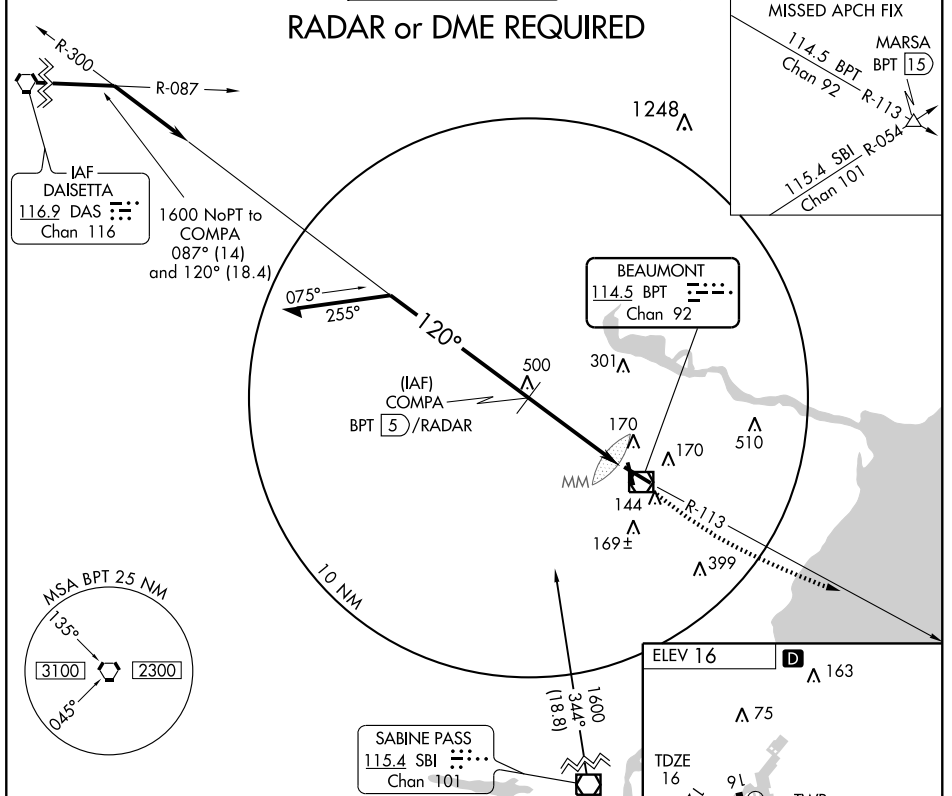
# VOR RWY 12

BEAUMONT-PORT ARTHUR/SOUTHEAST TEXAS RGNL (BPT)

VOR BPT <b>114.5</b> Chan 92	APP CRS <b>120°</b>	Rwy Idg TDZE <b>16</b> Apt Elev <b>16</b>	<b>6750</b>
------------------------------------	------------------------	---	-------------

<p><b>▲</b> For inoperative MALSR, increase S-12 Cats A/B visibility to RVR 5000 and Cat D to RVR 6000. * Cat E procedure turn not authorized.</p>	<p>MALSR</p>	<p>MISSED APPROACH: Climb to 1700 via BPT R-113 to MARSA Int/BPT 15 DME.</p>
	<p>ASR</p>	

ATIS <b>126.3</b>	HOUSTON APP CON <b>121.3 377.1</b>	BEAUMONT TOWER * <b>119.5 (CTAF) 0</b>	GND CON <b>121.9</b>	CLNC DEL <b>118.3</b>	UNICOM <b>122.95</b>
----------------------	---------------------------------------	---	-------------------------	--------------------------	-------------------------



CATEGORY	A	B	C	D	E	
S-12	420/40	404 (500-¾)		420/50	404 (500-1)	
CIRCLING	480-1	464 (500-1)	480-1½ 464 (500-1½)	580-2 564 (600-2)	820-2¾ 804 (900-2¾)	REIL Rwy 16, 30 and 34 HIRL Rwy 12-30, 16-34

# VOR RWY 12

SC-5, 22 OCT 2009 to 19 NOV 2009

SC-5, 22 OCT 2009 to 19 NOV 2009