

ILS RWY 12

BEAUMONT-PORT ARTHUR/SOUTHEAST TEXAS RGNL (BPT)

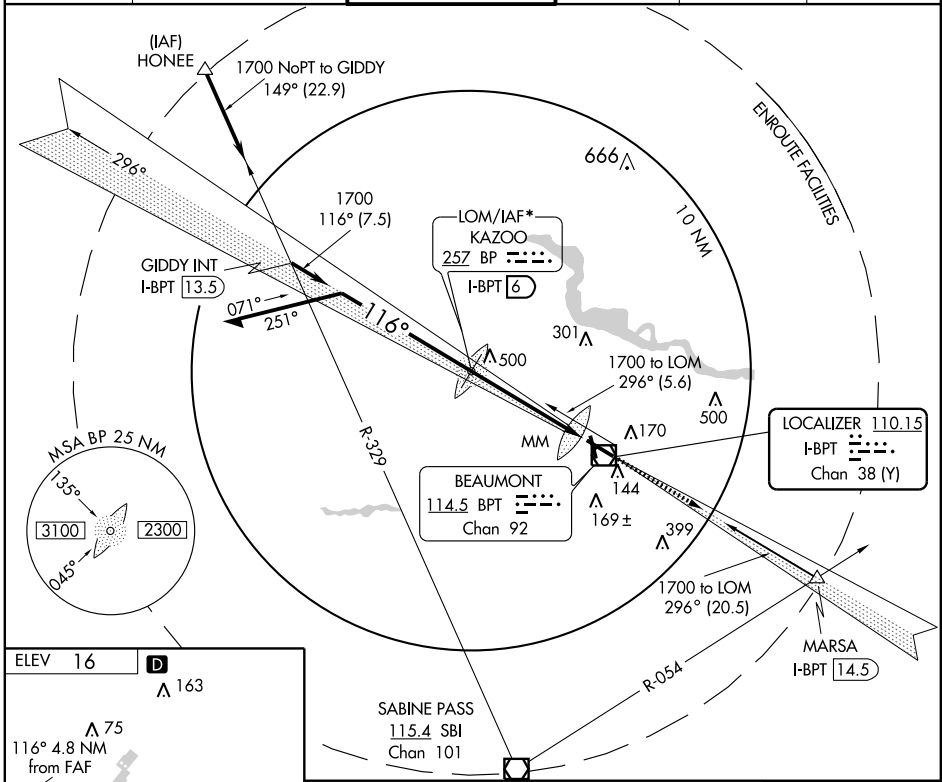
LOC I-BPT 110.15 Chan 38(Y)	APP CRS 116°	Rwy Idg TDZE Apt Elev	6750 16 16
---	------------------------	-----------------------------	---------------------------------------

▲ Inoperative table does not apply to S-ILS 12.
For inoperative MALSR, increase S-LOC 12 Cats A/B
ASR visibility to RVR 5000.



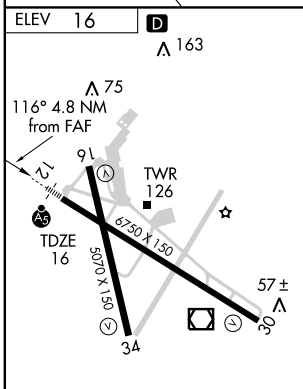
MISSED APPROACH: Climb to 1700 via I-BPT LOC SE course to MARSA Int/I-BPT 14.5 DME.

ATIS 126.3	HOUSTON APP CON 121.3 377.1	BEAUMONT TOWER * 119.5 (CTAF) 0	GND CON 121.9	CLNC DEL 118.3	UNICOM 122.95
----------------------	---------------------------------------	---	-------------------------	--------------------------	-------------------------



SC-5, 22 OCT 2009 to 19 NOV 2009

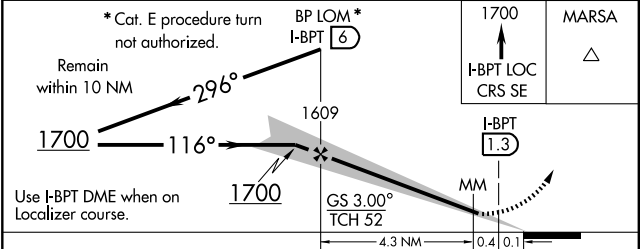
SC-5, 22 OCT 2009 to 19 NOV 2009



REIL Rwy 16, 30 and 34
HIRL Rwy 12-30, 16-34

FAF to MAP 4.7 NM

Knots	60	90	120	150	180
Min:Sec	4:42	3:08	2:21	1:53	1:34



CATEGORY	A	B	C	D	E
S-ILS 12	216/40 200 (200-¾)				
S-LOC 12	420/40 404 (500-¾)				420/50 404 (500-1)
CIRCLING	480-1	464 (500-1)	480-1½ 464 (500-1½)	580-2 564 (600-2)	820-2¾ 804 (900-2¾)

ILS RWY 12