

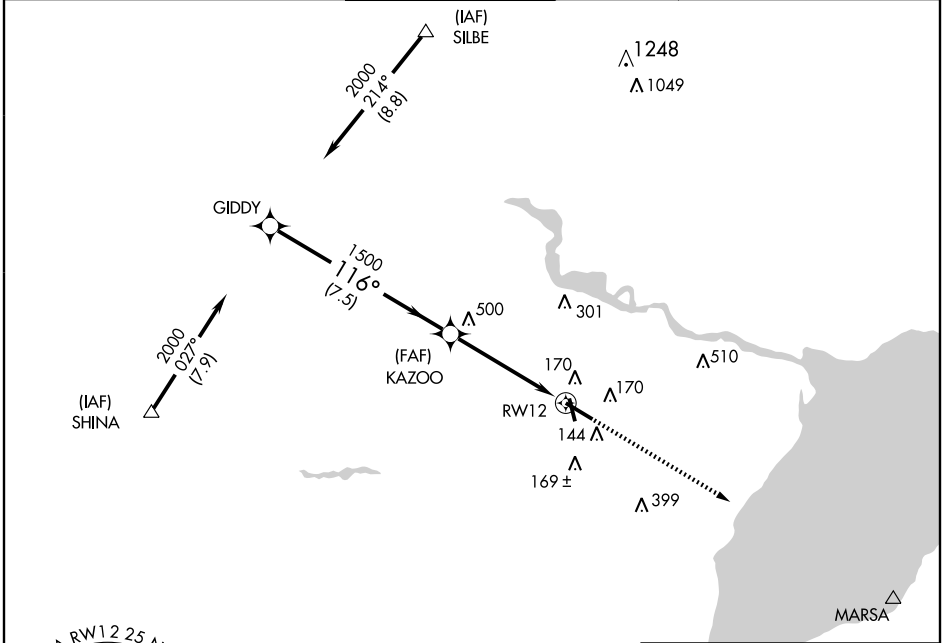
GPS RWY 12

APP CRS 116°	Rwy Idg 6750
	TDZE 16
	Apt Elev 15

BEAUMONT-PORT ARTHUR/SOUTHEAST TEXAS RGNL (BPT)

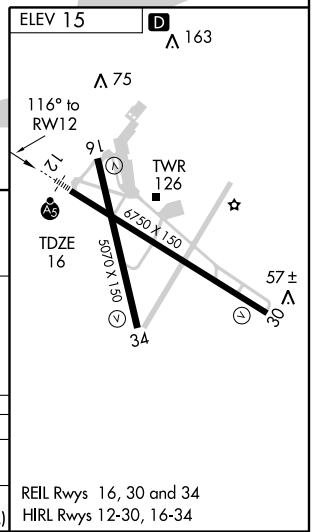
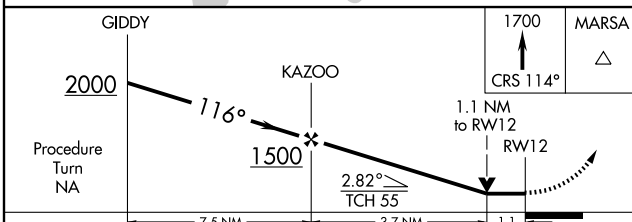
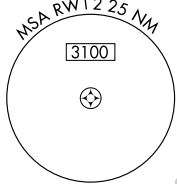
▲ NA For inoperative MALS, increase S-12 Cats A/B visibility to RVR 5000. ASR	MALS 	MISSED APPROACH: Climb to 1700 via 114° course to MARS.

ATIS 126.3	HOUSTON APP CON 121.3 377.1	BEAUMONT TOWER * 119.5(CTAF) 0	GND CON 121.9	CLNC DEL 118.3	UNICOM 122.95
----------------------	---------------------------------------	--	-------------------------	--------------------------	-------------------------



SC-5, 22 OCT 2009 to 19 NOV 2009

SC-5, 22 OCT 2009 to 19 NOV 2009



CATEGORY	A	B	C	D	E
S-12	420/40 405 (500-¾)		420/50 405 (500-1)		
CIRCLING	480-1	465 (500-1)	480-1½ 465 (500-1½)	580-2 565 (600-2)	820-2¾ 805 (900-2¾)

REIL Rwy 16, 30 and 34
HIRL Rwy 12-30, 16-34

GPS RWY 12