

# VOR/DME RWY 22

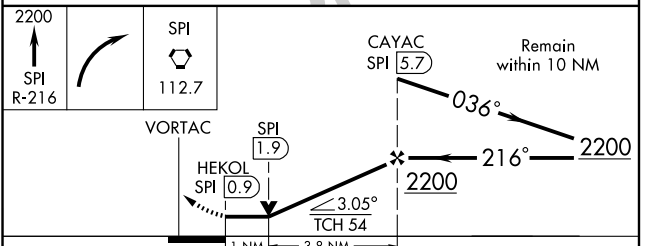
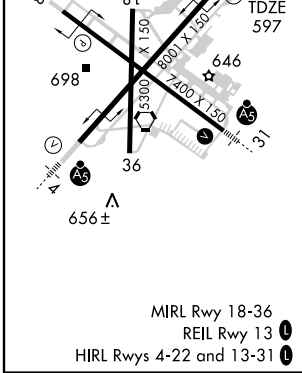
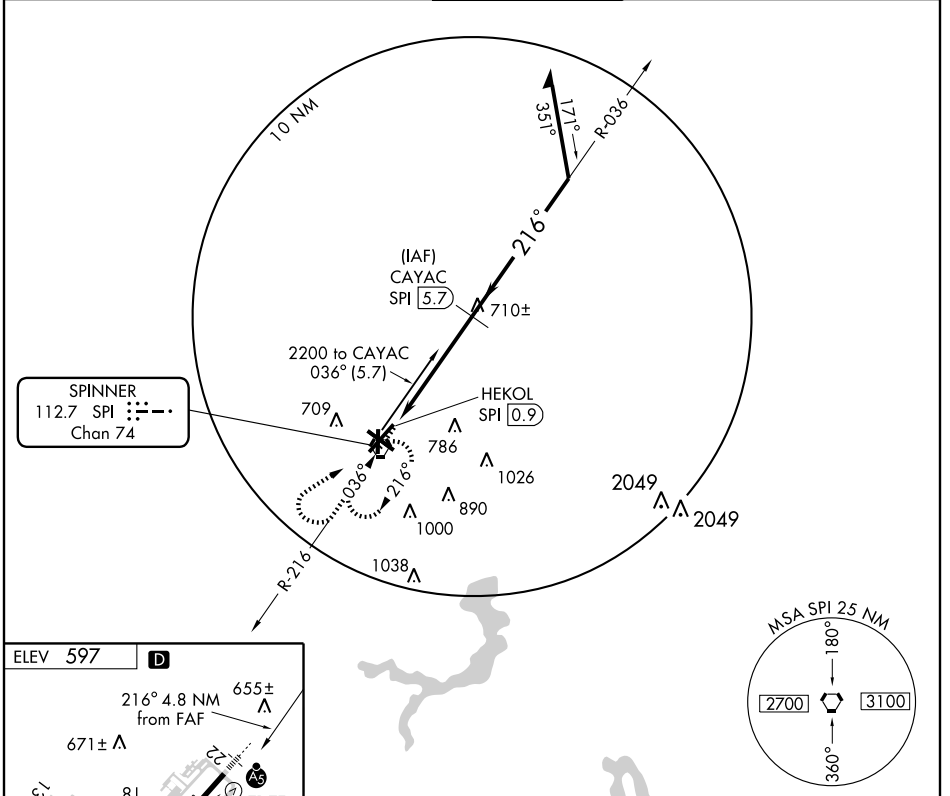
SPRINGFIELD/ ABRAHAM LINCOLN CAPITAL (SPI)

VORTAC SPI <b>112.7</b> Chan <b>74</b>	APP CRS <b>216°</b>	Rwy Idg TDZE Apt Elev	<b>7999</b> <b>597</b> <b>597</b>
--	------------------------	-----------------------------	---

**⚠** If local altimeter setting not received, use Logan County altimeter setting and increase all MDAs 60 feet. For inoperative MALSR, increase S-22 ASR Cat. D visibility to 1¼. VDP NA when using Logan County altimeter setting.

**MALSR** MISSED APPROACH: Climb to 2200 via SPI R-216 then right turn direct SPI VORTAC and hold.

ATIS <b>127.65 270.1</b>	SPRINGFIELD APP CON ★ <b>118.6 323.0</b>	SPRINGFIELD TOWER ★ <b>121.3(CTAF) 257.8</b>	GND CON <b>121.9 348.6</b>	CLNC DEL <b>121.7</b>	UNICOM <b>122.95</b>
-----------------------------	---	---	-------------------------------	--------------------------	-------------------------



CATEGORY	A	B	C	D
S-22	960-½ 363 (400-½)			960-1 363 (400-1)
CIRCLING	1020-1 423 (500-1)	1060-1 463 (500-1)	1060-1½ 463 (500-1½)	1200-2 603 (700-2)

# VOR/DME RWY 22

EC-3, 22 OCT 2009 to 19 NOV 2009

EC-3, 22 OCT 2009 to 19 NOV 2009