

# RNAV (GPS) RWY 4

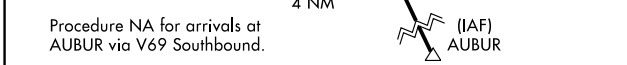
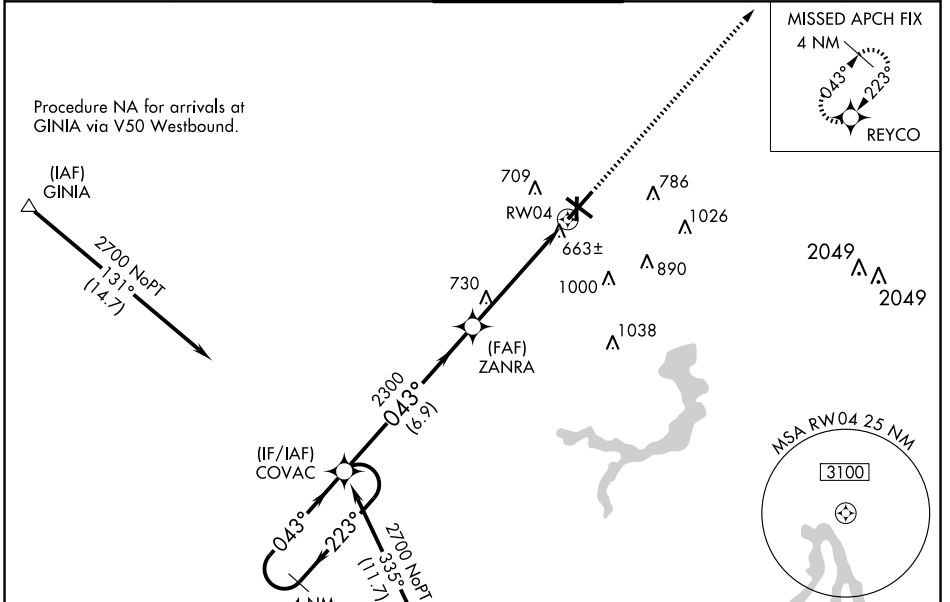
SPRINGFIELD/ABRAHAM LINCOLN CAPITAL (SPI)

WAAS CH <b>70309</b> <b>W04A</b>	APP CRS <b>043°</b>	Rwy Idg TDZE Apt Elev	<b>7999</b> <b>592</b> <b>597</b>
--	------------------------	-----------------------------	---

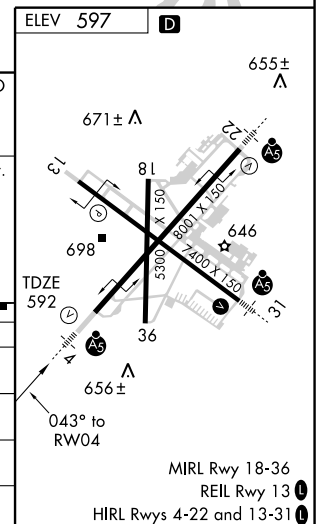
**ASR** DME/DME RNP-0.3 NA. Baro-VNAV NA below -16°C (4°F).  
 If local altimeter setting not received, use Logan County altimeter setting and increase all DAs/MDAs 60 feet. Baro-VNAV and VDP NA when using Logan County altimeter setting. For inoperative MALSR, increase LPV visibility to RVR 5000 all Cats. and LNAV Cat. D visibility to RVR 6000.

**MALSR** MISSED APPROACH: Climb to 2600 direct REYCO and hold.

ATIS <b>127.65 270.1</b>	SPRINGFIELD APP CON * <b>118.6 323.0</b>	SPRINGFIELD TOWER * <b>121.3(CTAF) 0 257.8</b>	GND CON <b>121.9 348.6</b>	CLNC DEL <b>121.7</b>	UNICOM <b>122.95</b>
-----------------------------	---	---	-------------------------------	--------------------------	-------------------------



CATEGORY	A	B	C	D
LPV DA	854/24		262 (300-½)	
LNAV/VNAV DA	931/40		339 (400-¾)	
LNAV MDA	980/24 388 (400-½)		980/50 388 (400-1)	
CIRCLING	1020-1¼ 423 (500-1¼)	1060-1¼ 463 (500-1¼)	1060-1½ 463 (500-½)	1200-2 603 (700-2)



EC-3, 22 OCT 2009 to 19 NOV 2009

EC-3, 22 OCT 2009 to 19 NOV 2009