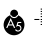


RNAV (GPS) RWY 31

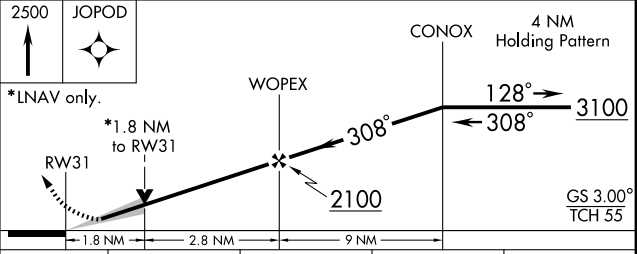
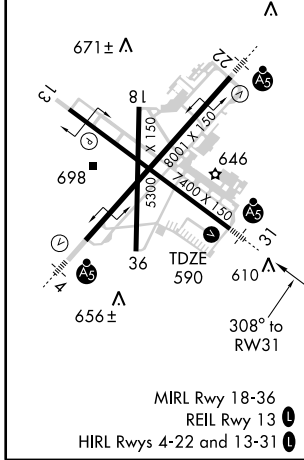
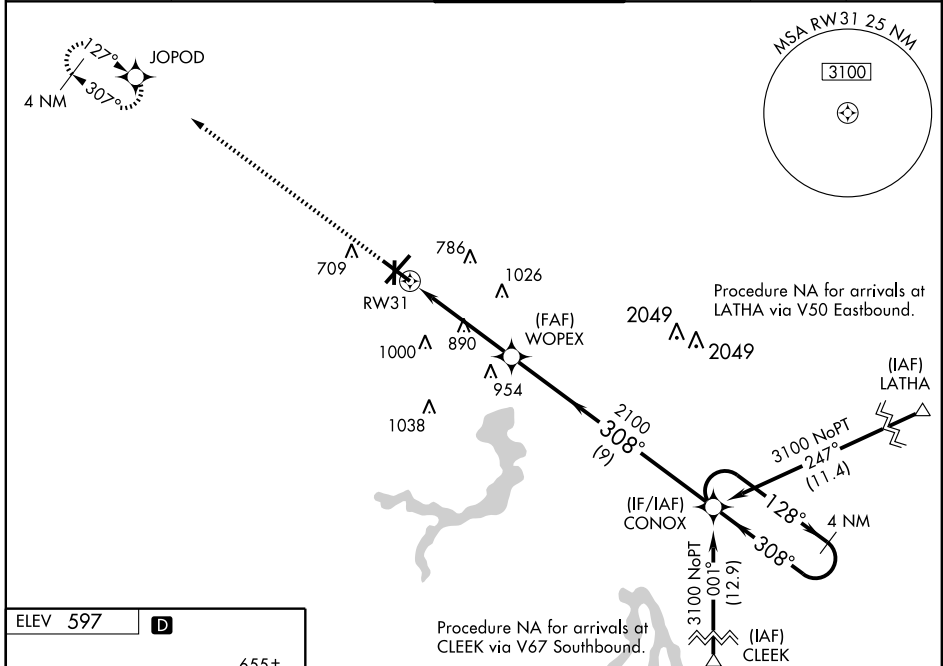
SPRINGFIELD/ABRAHAM LINCOLN CAPITAL (SPI)

WAAS CH 90124 W31A	APP CRS 308°	Rwy Idg TDZE Apt Elev	7000 590 597
----------------------------------------	------------------------	-----------------------------	-----------------------------------------

⚠ DME/DME RNP-0.3 NA. Baro-VNAV NA below -16°C (4°F).
⚠ If local altimeter setting not received, use Logan County altimeter setting and increase all DAs/MDAs 60 feet. VDP and Baro-VNAV NA when using Logan County altimeter setting. For inoperative MALSR, increase LPV visibility to ¾ all Cats, increase LNAV/VNAV Cat. D visibility to 1.

MALSR

MISSED APPROACH: Climb to 2500 direct JOPOD and hold.

ATIS 127.65 270.1	SPRINGFIELD APP CON * 118.6 323.0	SPRINGFIELD TOWER * 121.3(CTAF) 257.8	GND CON 121.9 348.6	CLNC DEL 121.7	UNICOM 122.95
-----------------------------	---------------------------------------------	-------------------------------------------------	-------------------------------	--------------------------	-------------------------



CATEGORY	A	B	C	D
LPV DA	840-½ 250 (300-½)			
LNAV/VNAV DA	865-½ 275 (300-½)			865-¾ 275 (300-¾)
LNAV MDA	1200-½ 610 (700-½)	1200-1¼ 610 (700-1¼)		1200-1½ 610 (700-1½)
CIRCLING	1200-1 603 (700-1)	1200-1¾ 603 (700-1¾)		1200-2 603 (700-2)

EC-3, 22 OCT 2009 to 19 NOV 2009

EC-3, 22 OCT 2009 to 19 NOV 2009