

# RNAV (GPS) RWY 13

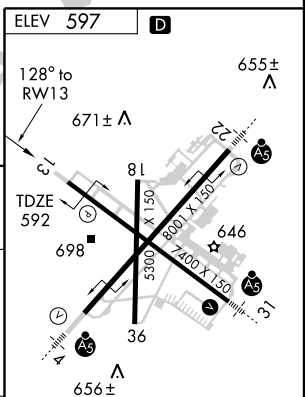
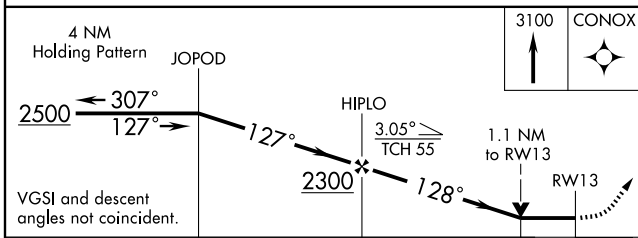
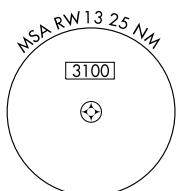
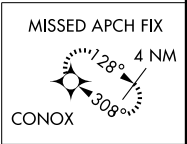
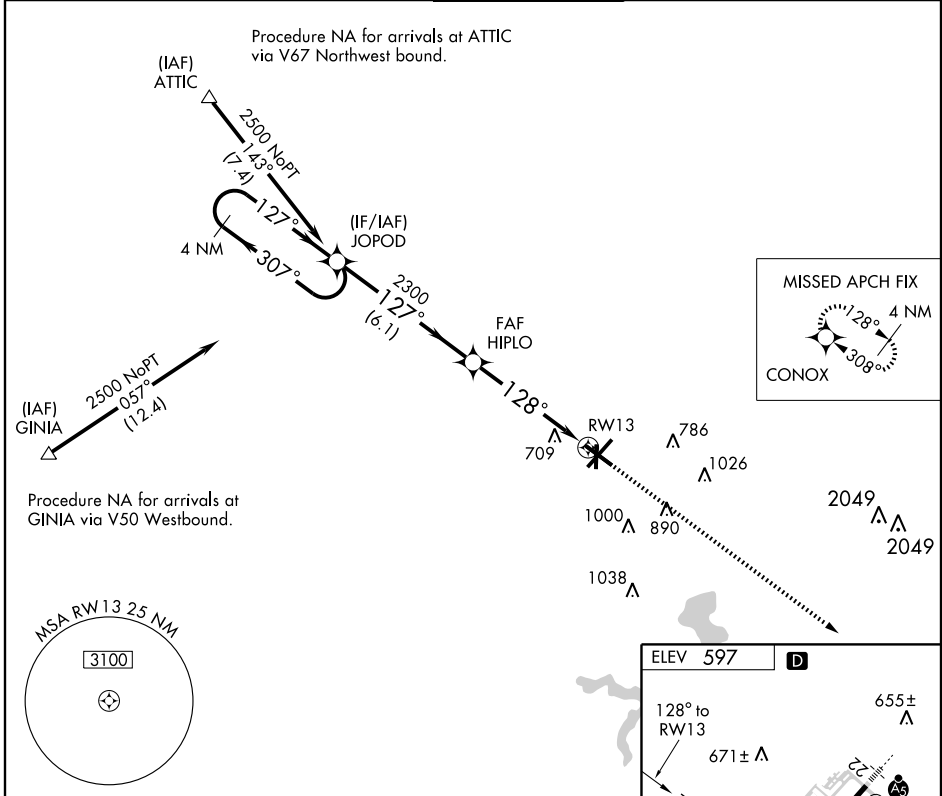
SPRINGFIELD/ABRAHAM LINCOLN CAPITAL (SPI)

APP CRS	Rwy Idg	<b>7217</b>
<b>128°</b>	TDZE	<b>592</b>
	Apt Elev	<b>597</b>

**⚠** DME/DME RNP-0.3 NA. If local altimeter setting not received, use Logan County altimeter setting and increase all MDAs 60 feet.  
**ASR** VDP NA when using Logan County altimeter setting.

**MISSED APPROACH:** Climb to 3100 direct CONOX and hold.

ATIS	SPRINGFIELD APP CON★	SPRINGFIELD TOWER★	GND CON	CLNC DEL	UNICOM
<b>127.65 270.1</b>	<b>118.6 323.0</b>	<b>121.3(CTAF) 0 257.8</b>	<b>121.9 348.6</b>	<b>121.7</b>	<b>122.95</b>



CATEGORY	A	B	C	D
LNVA MDA	960-1 368 (400-1)			960-1¼ 368 (400-1¼)
CIRCLING	1020-1 423 (500-1)	1060-1 463 (500-1)	1060-1½ 463 (500-1½)	1200-2 603 (700-2)

MIRL Rwy 18-36  
 REIL Rwy 13  
 HIRL Rwys 4-22 and 13-31

EC-3, 22 OCT 2009 to 19 NOV 2009

EC-3, 22 OCT 2009 to 19 NOV 2009

# RNAV (GPS) RWY 13