


ILS or LOC RWY 4

SPRINGFIELD/ ABRAHAM LINCOLN CAPITAL (SPI)

LOC I-SPI 109.5	APP CRS 043°	Rwy Idg 7999
		TDZE 592
		Apt Elev 597

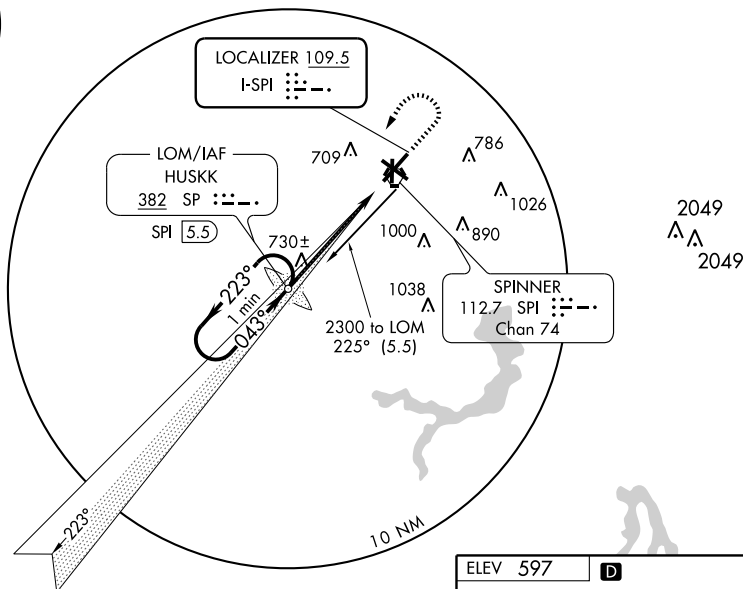
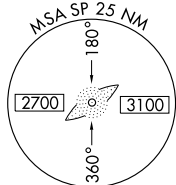
⚠ If local altimeter setting not received, use Logan County altimeter setting and increase all DAs/MDAs 60 feet. ADF REQUIRED.
ASR *RVR 1800 authorized with the use of FD or AP or HUD to DA.

MALSR 

MISSED APPROACH: Climb to 1500 then climbing left turn to 2300 direct HUSKK LOM and hold.

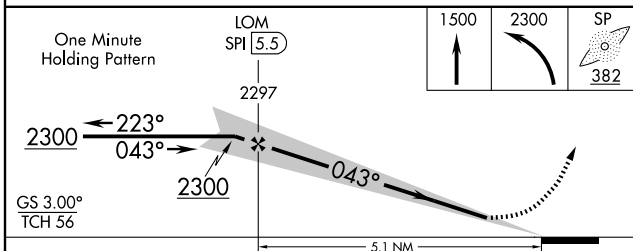
ATIS 127.65 270.1	SPRINGFIELD APP CON * 118.6 323.0	SPRINGFIELD TOWER * 121.3(CTAF) 257.8	GND CON 121.9 348.6	CLNC DEL 121.7	UNICOM 122.95
-----------------------------	---	---	-------------------------------	--------------------------	-------------------------

ADF or DME REQUIRED

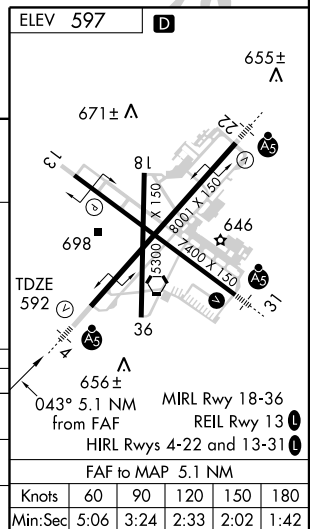


EC-3, 22 OCT 2009 to 19 NOV 2009

EC-3, 22 OCT 2009 to 19 NOV 2009



CATEGORY	A	B	C	D
S-ILS 4	* 792/24 200 (200-1/2)			
S-LOC 4	980/24 388 (400-1/2)		980/40 388 (400-3/4)	
CIRCLING	1020-1 423 (500-1)	1060-1 463 (500-1)	1060-1 1/2 463 (500-1 1/2)	1200-2 603 (700-2)



Knots	60	90	120	150	180
Min:Sec	5:06	3:24	2:33	2:02	1:42