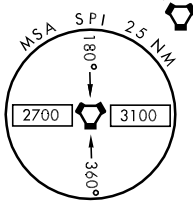
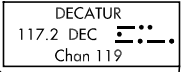
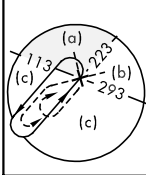
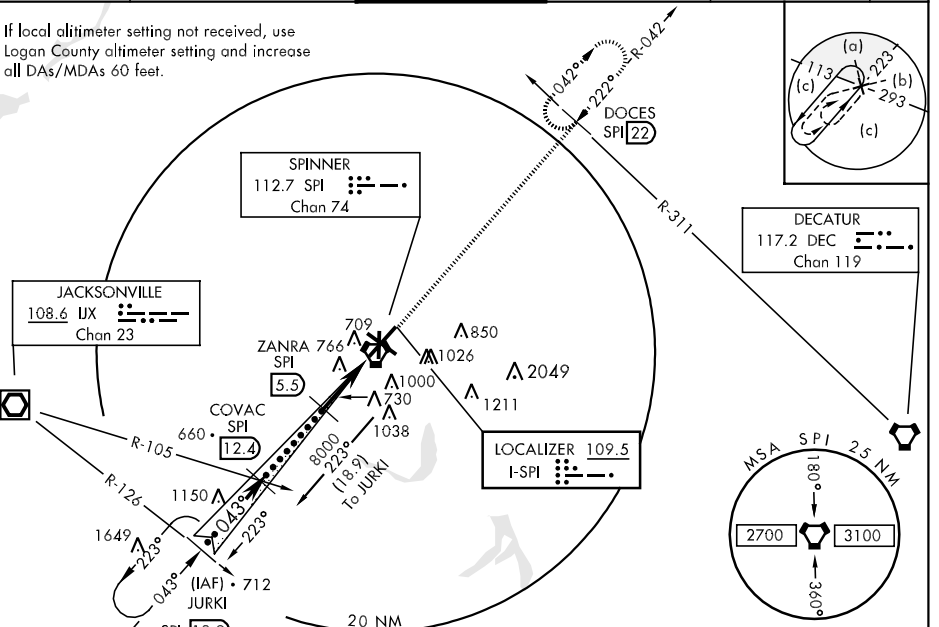


LOC I-SPI <b>109.5</b>	APCH CRS <b>043°</b>	Rwy Idg TDZE Arpt Elev <b>8001</b> <b>592</b> <b>598</b>	JAL-518 [USAF]	SPRINGFIELD/ABRAHAM LINCOLN CAPITAL (KSPI)		
Procedure NA when tower is closed. * When ALS inop, increase vis CAT CDE ¼ mile. ** When ALS inop, increase vis CAT CDE ½ mile.			MALSRL A5	MISSED APPROACH: Climb to 1100 then climbing right turn to 8000 via hdg 050° and SPI VORTAC R-042 to DOCES INT/SPI VORTAC 22 DME and hold, continue in-hold-climb to 8000.		

ATIS <b>127.65 270.1</b>	SPRINGFIELD APP CON <b>118.6 323.0</b>	SPRINGFIELD TOWER <b>121.3 (CTAF) 0 257.8</b>	GND CON <b>121.9 348.6</b>	CLNC DEL <b>121.7</b>	ASR
-----------------------------	---	--	-------------------------------	--------------------------	-----

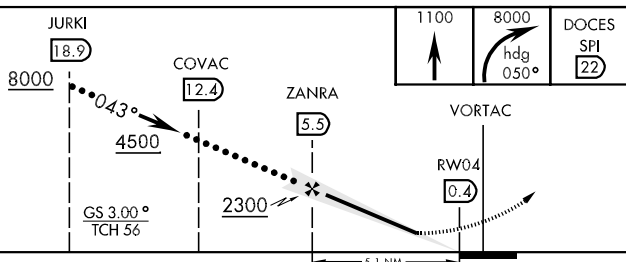
If local altimeter setting not received, use Logan County altimeter setting and increase all DAs/MDAs 60 feet.



EC-3, 22 OCT 2009 to 19 NOV 2009

EC-3, 22 OCT 2009 to 19 NOV 2009

EMERG SAFE ALT 100 NM 3100



ELEV 598
HIRL Rwy 4-22, 13-31
MIRL Rwy 18-36
REIL Rwy 13

FAF to MAP 5.1 NM	Knots	120	140	160	180	200
	Min:Sec	2:33	2:11	1:55	1:42	1:32

CATEGORY	C	D	E
S-ILS 4 *	792/24	200	(200-½)
S-LOC 4 **	980/24 388 (400-½)	980/40 603 (700-2)	388 (400-¾)
CIRCLING	1060-1½ 463 (500-1½)	1200-2 603 (700-2)	1380-2¾ 783 (800-2¾)
S-ASR 4	960/24 368 (400-½)	960/50	368 (400-1)