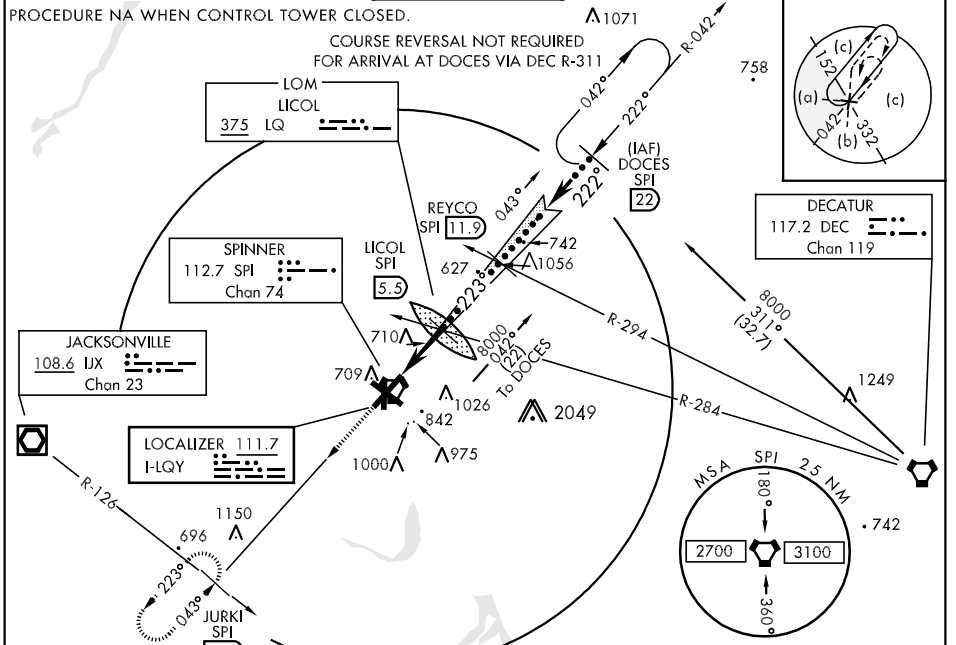


LOC I-LQY <b>111.7</b>	APCH CRS <b>223°</b>	Rwy Idg TDZE <b>8001</b> <b>597</b> Arpt Elev <b>598</b>	JAL-518 [USAF]	SPRINGFIELD/ABRAHAM LINCOLN CAPITAL (KSPI)
---------------------------	-------------------------	--	----------------	--

**▽** \*When ALS inop, increase CAT CDE vis ½ mile.  
**\*\***When ALS inop, increase CAT CDE vis ½ mile.  
 If local altimeter setting not rcv, use Logan County altimeter setting and INCR all DAs/MDAs 60 feet.

**MALSR** MISSED APPROACH: Climb to 1100 then climbing left turn to 8000 via hdg 230° and SPI VORTAC R-223 to JURKI INT/SPI 18.9 DME and hold, continue climb-in-hold to 8000.

ATIS <b>127.65 270.1</b>	SPRINGFIELD APP CON <b>118.6 323.0</b>	SPRINGFIELD TOWER <b>121.3 (CTAF) 0 257.8</b>	GND CON <b>121.9 348.6</b>	CLNC DEL <b>121.7</b>	ASR
-----------------------------	---	--	-------------------------------	--------------------------	-----



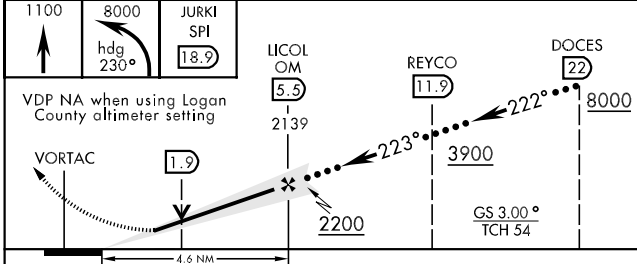
EMERG SAFE ALT 100 NM 3100

1100	8000	JURKI SPI 18.9
------	------	----------------

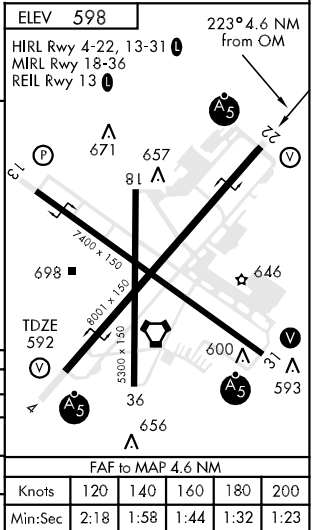
VDP NA when using Logan County altimeter setting

VORTAC 1.9

GS 3.00° TCH 54



CATEGORY	C	D	E
S-ILS 22 *	797-½	200	(200-½)
S-LOC 22 **	960-½ (400-½)	960-¾	363 (400-¾)
CIRCLING	1060-1½ (500-1½)	1200-2 (700-2)	1380-2¾ (800-2¾)
S-ASR 22	960-½ (400-½)	960-1	363 (400-1)



EC-3, 22 OCT 2009 to 19 NOV 2009

EC-3, 22 OCT 2009 to 19 NOV 2009