

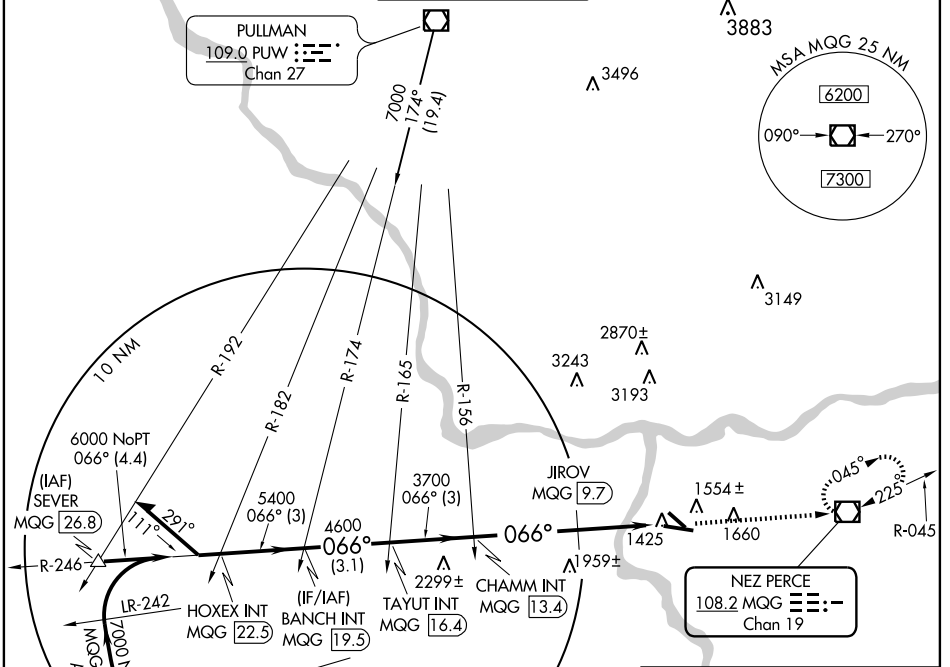
VOR/DME MQG 108.2 Chan 19	APP CRS 066°	Rwy Idg TDZE 1440 Apt Elev 1442	6511
--	------------------------	---	-------------

VOR RWY 8

LEWISTON-NEZ PERCE COUNTY (LWS)

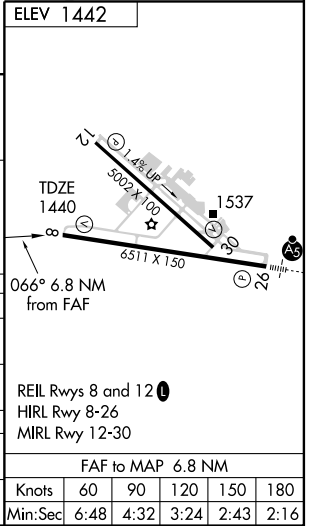
▲ MISSED APPROACH: Climb to 5000 direct MQG VOR/DME and hold, continue climb-in-hold to 5000.

ASOS 135.575	SEATTLE CENTER 123.95 282.3	LEWISTON TOWER ★ 119.4 (CTAF) 0 318.8	GND CON 121.9	UNICOM 122.95
------------------------	---------------------------------------	---	-------------------------	-------------------------



NW-1, 22 OCT 2009 to 19 NOV 2009

	HOXEX INT MQG 22.5	BANCH INT MQG 19.3	TAYUT INT MQG 16.4	CHAMM INT MQG 13.4	JIROV MQG 9.7	5000 MQG 108.2
	6800	6000	5400	4600	3700	2480
	246°	066°	3.09°	TCH 45	MQG 8.9	MQG 6.6
	3 NM	3.1 NM	3 NM	3.7 NM	0.7	2.4 NM
CATEGORY	A	B	C		D	
S-8	2480-1¼ 1040 (1100-1¼)	2480-1½ 1040 (1100-1½)	2480-3 1040 (1100-3)			
CIRCLING	2480-1¼ 1038 (1100-1¼)	2480-1½ 1038 (1100-1½)	2480-3 1038 (1100-3)			
JIROV FIX MINIMUMS						
S-8	2220-1 780 (800-1)	2220-1¼ 780 (800-1¼)	2220-2¼ 780 (800-2¼)	2220-2½ 780 (800-2½)		
CIRCLING	2220-1 778 (800-1)	2220-1¼ 778 (800-1¼)	2220-2¼ 778 (800-2¼)	2220-2½ 778 (800-2½)		



Knots	60	90	120	150	180
Min:Sec	6:48	4:32	3:24	2:43	2:16