

RNAV (GPS) RWY 8

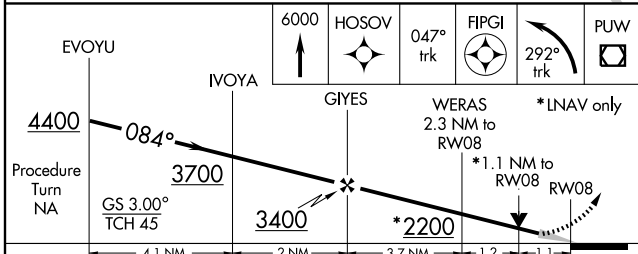
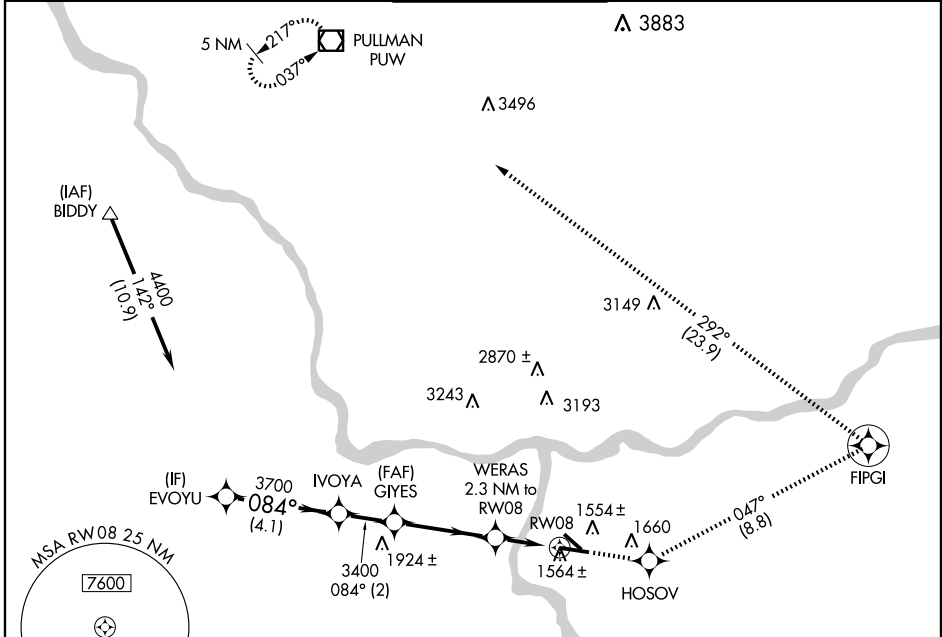
LEWISTON-NEZ PERCE COUNTY (LWS)

WAAS CH 97600 W08A	APP CRS 084°	Rwy Idg TDZE Apt Elev	6511 1440 1442
--	------------------------	-----------------------------	---

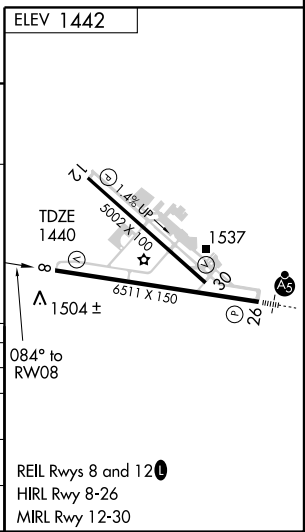
⚠ For uncompensated Baro-VNAV systems, LNAV/VNAV NA below -17°C (2°F) or above 46°C (114°F).
⚠ DME/DME RNP-0.3 NA.
 When local altimeter setting not received, procedure NA.

MISSED APPROACH: Climb to 6000 direct HOSOY and via 047° track to FIPGI, and left turn via 292° track to PUW VOR/DME and hold.

ASOS 135.575	SEATTLE CENTER 123.95 282.3	LEWISTON TOWER * 119.4 (CTAF) 318.8	GND CON 121.9	UNICOM 122.95
------------------------	---------------------------------------	---	-------------------------	-------------------------



CATEGORY	A	B	C	D
LPV DA		1690-1	250 (300-1)	
LNAV/VNAV DA		1831-1½	391 (400-1½)	
LNAV MDA	1820-1	380 (400-1)		1820-1¼ 380 (400-1¼)
CIRCLING	1900-1 458 (500-1)	1920-1 478 (500-1)	1960-1½ 518 (600-1½)	2160-2¼ 718 (800-2¼)



NW-1, 22 OCT 2009 to 19 NOV 2009

NW-1, 22 OCT 2009 to 19 NOV 2009