

LEWISTON, IDAHO

AL-515 (FAA)

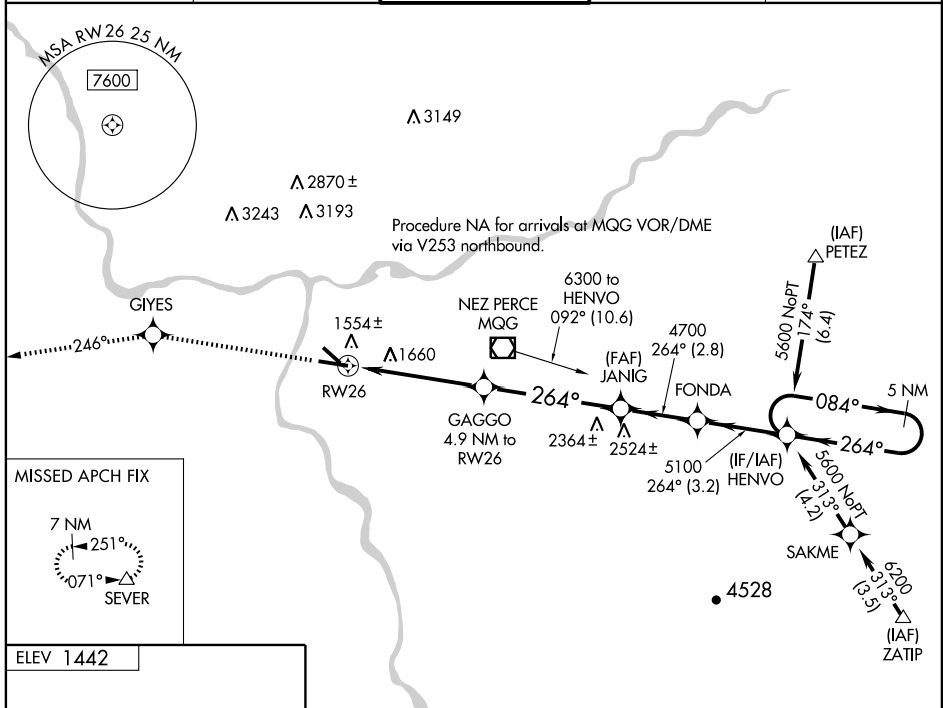
WAAS CH 78012 W 26A	APP CRS 264°	Rwy Idg TDZE 1442 Apt Elev 1442	6511
---	------------------------	---	-------------

RNAV (GPS) RWY 26

LEWISTON-NEZ PERCE COUNTY (LWS)

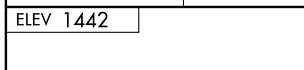
<p>⚠ When local altimeter setting not received, procedure NA. ⚠ For uncompensated Baro-VNAV systems, LNAV/VNAV NA below -17°C (2°F) or above 47°C (116°F). DME/DME RNP-0.3 NA.</p>	<p>MALSR </p>	<p>MISSED APPROACH: Climb to 7000 direct GIYES and via 246° track to SEVER and hold, continue climb-in-hold to 7000.</p>
---	--------------------	--

ASOS 135.575	SEATTLE CENTER 123.95 282.3	LEWISTON TOWER * 119.4 (CTAF) 0 318.8	GND CON 121.9	UNICOM 122.95
------------------------	---------------------------------------	--	-------------------------	-------------------------



NW-1, 22 OCT 2009 to 19 NOV 2009

NW-1, 22 OCT 2009 to 19 NOV 2009



7000	GIYES	trk 246°	SEVER				
*LNAV only		GAGGO		JANIG	FONDA	HENVO	5 NM Holding Pattern
*1.4 NM to RW26		*1.4 NM to 4.9 NM to RW26		264°	264°	084°	5600
RW26		RW26		3060*	4700	5100	GS 3.00° TCH 51
1.4 NM		3.5 NM		4.9 NM	2.8 NM	3.2 NM	
CATEGORY	A		B		C		D
LPV DA			1642-1/2		200 (200-1/2)		
LNAV/VNAV DA			1962-1 1/4		520 (600-1 1/4)		
LNAV MDA	1920-1/2		478 (500-1/2)		1920-3/4 478 (500-3/4)		1920-1 478 (500-1)
CIRCLING	1920-1		478 (500-1)		1960-1 1/2 518 (600-1 1/2)		2160-2 1/4 718 (800-2 1/4)

REIL Rwy 8 and 12
HIRL Rwy 8-26
MIRL Rwy 12-30

LEWISTON, IDAHO
Orig 09295

46°22'N - 117°01'W

LEWISTON-NEZ PERCE COUNTY (LWS) RNAV (GPS) RWY 26