

LEWISTON, IDAHO

AL-515 (FAA)

RNAV (GPS) RWY 12

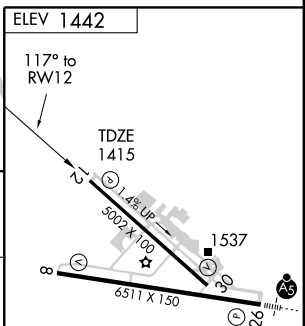
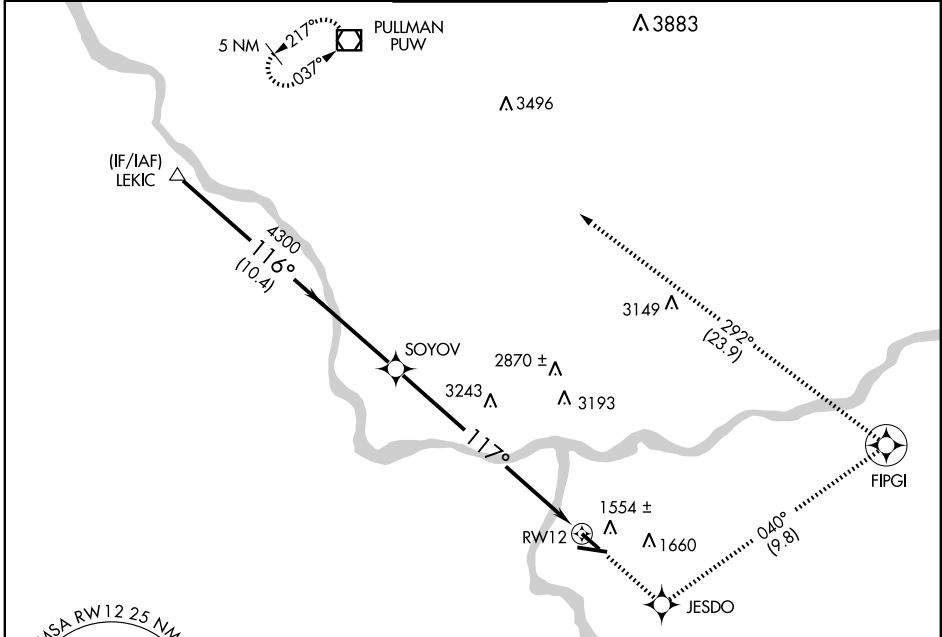
LEWISTON-NEZ PERCE COUNTY (LWS)

WAAS CH 56500 W12A	APP CRS 117°	Rwy Idg 5002 TDZE 1415 Apt Elev 1442
--	------------------------	---

⚠ Circling requires descent on glidepath to CMDA. DME/DME RNP-0.3 NA.
⚠ Visibility reduction by helicopters NA.
 When local altimeter setting not received, procedure NA.

MISSED APPROACH: Climb to 6000 direct JESDO and via 040° track to FIPGI, and left turn via 292° track to PUW VOR/DME and hold.

ASOS 135.575	SEATTLE CENTER 123.95 282.3	LEWISTON TOWER ★ 119.4 (CTAF) 318.8	GND CON 121.9	UNICOM 122.95
------------------------	---------------------------------------	---	-------------------------	-------------------------



LEKIC	6000	JESDO	040° trk	FIPGI	292° trk	PUW
6000	SOYOV	RWY 12				
Procedure Turn NA						
GS 3.00° TCH 40						
CATEGORY	A	B	C	D		
LPV DA	1748-1¼		333 (400-1¼)			
CIRCLING	1900-1¼ 458 (500-1¼)	1920-1¼ 478 (500-1¼)	1960-1½ 518 (600-1½)	2160-2¼ 718 (800-2¼)		

REIL Rwy 8 and 12
 HIRL Rwy 8-26
 MIRL Rwy 12-30

NW-1, 22 OCT 2009 to 19 NOV 2009

NW-1, 22 OCT 2009 to 19 NOV 2009

LEWISTON, IDAHO
 Amdt 1 09295

46°22'N- 117°01'W

LEWISTON-NEZ PERCE COUNTY (LWS) RNAV (GPS) RWY 12