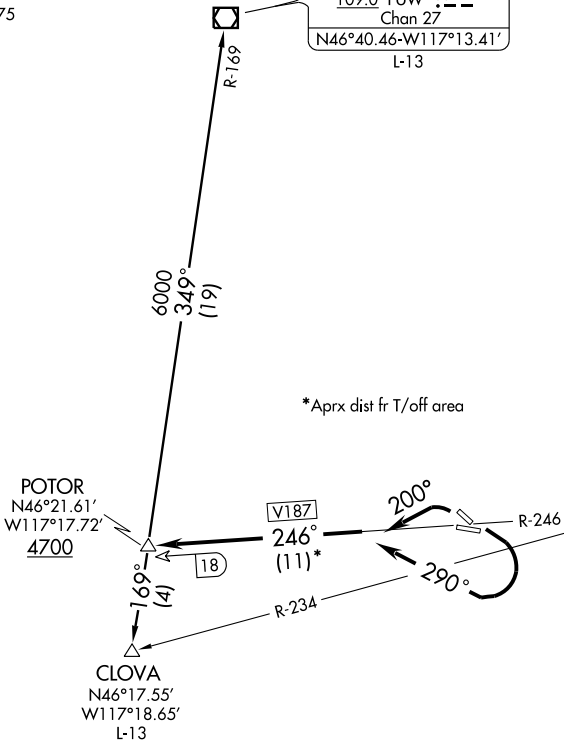


GND CON  
121.9  
CTAF 119.4  
ASOS 135.575

PULLMAN  
109.0 PUV :---  
Chan 27  
N46°40.46-W117°13.41'  
L-13

NEZ PERCE  
108.2 MQG :---  
Chan 19



NOTE: Departure may be restricted to cross POTOR INT at 5000.

NOTE: Minimum climb required- Rws 26 and 29-300'/NM to 4700' (750 FPM/150K IAS 1000 FPM/200K IAS).  
Rws 8 and 11-270'/NM to 4700' (675 FPM/150K IAS, 900 FPM/200K IAS) or 4600' ceiling and three miles visibility.

NOTE: Chart not to scale.

### DEPARTURE ROUTE DESCRIPTION

TAKE-OFF RUNWAYS 8, 11: Turn right heading 290°. Thence....

TAKE-OFF RUNWAYS 26, 29: Turn left heading 200°. Thence....

....Intercept and proceed via MQG R-246 (V187) to POTOR INT. Thence via (assigned route) or (transition).

CLOVA TRANSITION (POTOR2.CLOVA): From over POTOR INT via PUV R-169 to CLOVA INT.

PULLMAN TRANSITION (POTOR2.PUW): From over POTOR INT via PUV R-169 to PUW VOR/DME.

NW-1, 22 OCT 2009 to 19 NOV 2009

NW-1, 22 OCT 2009 to 19 NOV 2009