


LEWISTON, IDAHO

AL-515 (FAA)

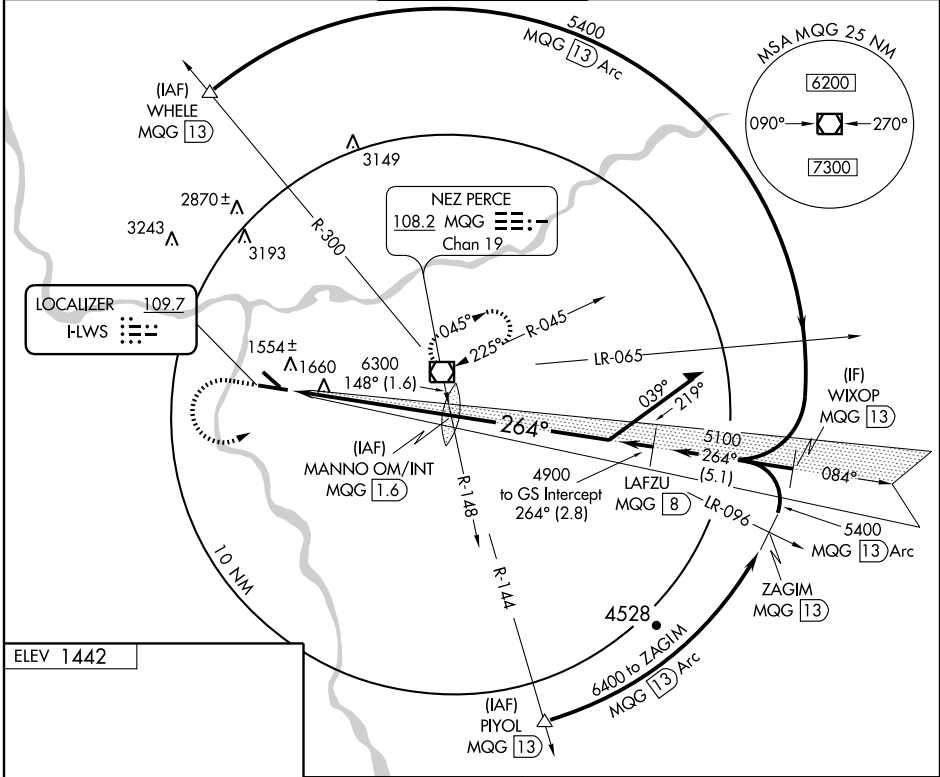
ILS RWY 26

LEWISTON-NEZ PERCE COUNTY (LWS)

LOC I-LWS 109.7	APP CRS 264°	Rwy Idg 6511
		TDZE 1442
		Apt Elev 1442

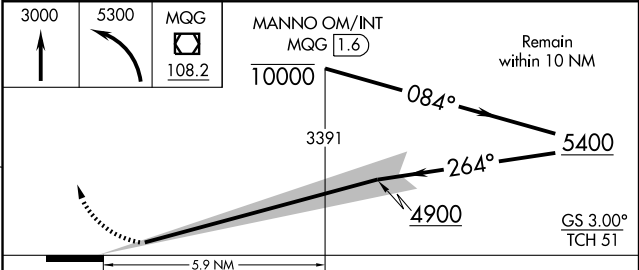
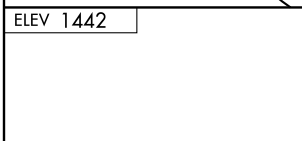
<p>▼ When local altimeter setting not received, procedure NA. Autopilot coupled approach NA below 2500. ▲ Circling requires descent on GS to CMDA.</p>	<p>MALSR </p>	<p>MISSED APPROACH: Climb to 3000 then climbing left turn to 5300 direct MQG VOR/DME and hold, continue climb-in-hold to 5300.</p>
--	---	--

ASOS 135.575	SEATTLE CENTER 123.95 282.3	LEWISTON TOWER* 119.4 (CTAF) 0 318.8	GND CON 121.9	UNICOM 122.95
------------------------	---------------------------------------	--	-------------------------	-------------------------



NW-1, 22 OCT 2009 to 19 NOV 2009

NW-1, 22 OCT 2009 to 19 NOV 2009



CATEGORY	A	B	C	D
S-ILS 26	1642-½ 200 (200-½)			
CIRCLING	1900-1 458 (500-1)	1920-1 478 (500-1)	1960-1½ 518 (600-1½)	2160-2¼ 718 (800-2¼)

LEWISTON, IDAHO
Amdt 12 09295

46°22'N - 117°01'W

LEWISTON-NEZ PERCE COUNTY (LWS)
ILS RWY 26