

RNAV (GPS) RWY 4

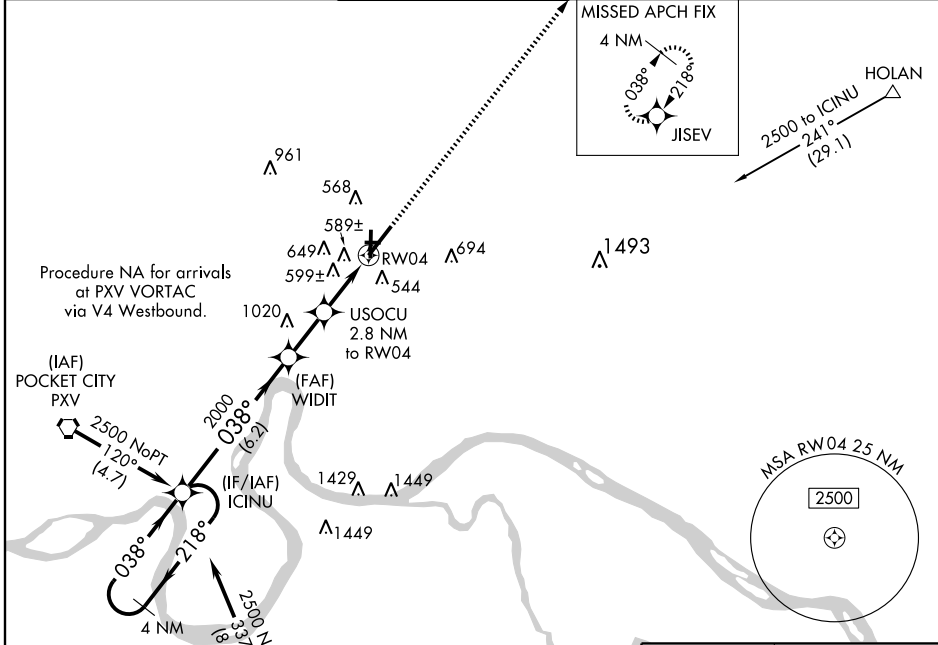
EVANSVILLE RGNL (E V V)

WAAS CH 82711 W04A	APP CRS 038°	Rwy Idg 6724 TDZE 385 Apt Elev 418
--	------------------------	---

ASR For uncompensated Baro-VNAV systems, LNAV/VNAV NA below -15°C (5°F) or above 48°C (118°F). DME/DME RNP-0.3 NA.

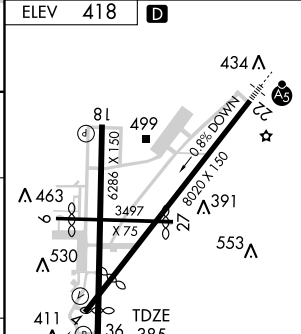
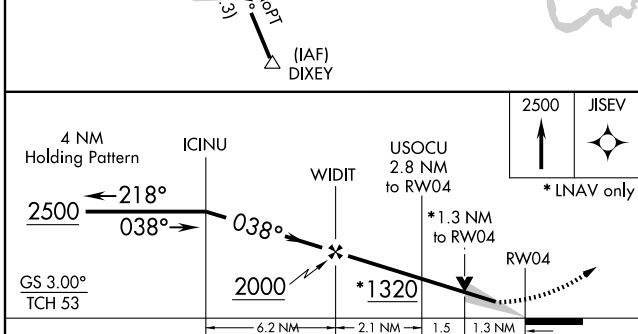
MISSED APPROACH: Climb to 2500 direct JISEV and hold.

ATIS 120.2	EVANSVILLE APP CON * 126.4 226.4	EVANSVILLE TOWER * 118.7 (CTAF) 0 257.8	GND CON 121.9	CLNC DEL 126.6	UNICOM 122.95
----------------------	--	---	-------------------------	--------------------------	-------------------------



EC-2, 22 OCT 2009 to 19 NOV 2009

EC-2, 22 OCT 2009 to 19 NOV 2009



CATEGORY	A	B	C	D
LPV DA		585-3/4	200 (200-3/4)	
LNAV/VNAV DA		970-2	585 (600-2)	
LNAV MDA	860-1	475 (500-1)	860-1 1/4 475 (500-1 1/4)	860-1 1/2 475 (500-1 1/2)
CIRCLING	940-1 522 (600-1)	960-1 542 (600-1)	960-1 1/2 542 (600-1 1/2)	980-2 562 (600-2)

HIRL Rwy 4-22
REIL Rwy 4, 18, and 36
MIRL Rws 9-27 and 18-36