

RNAV (GPS) RWY 22

EVANSVILLE RGNL (EVV)

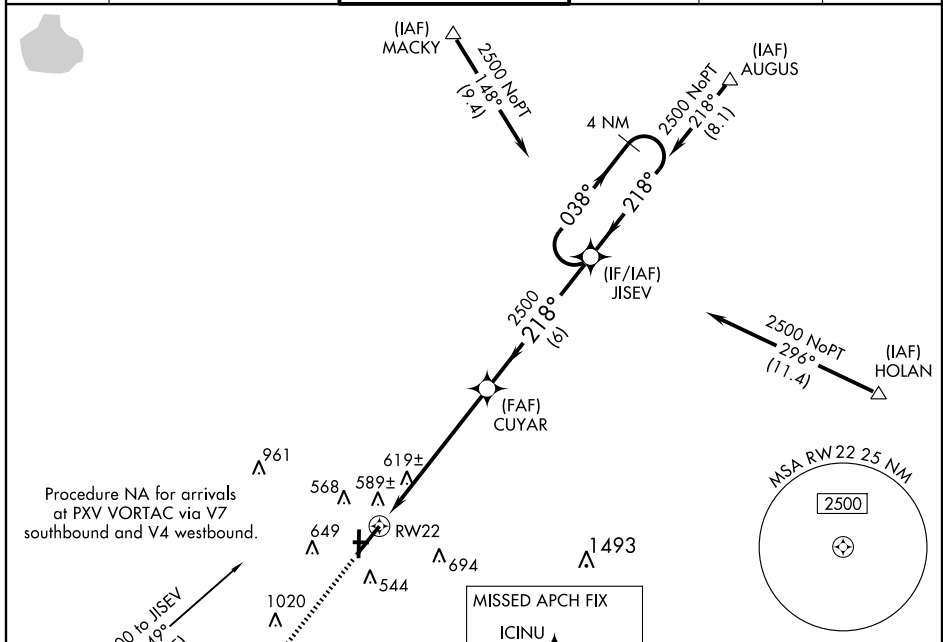
WAAS CH 42512 W22A	APP CRS 218°	Rwy Idg 8020
		TDZE 418
		Apt Elev 418

ASR For uncompensated Baro-VNAV systems, LNAV/VNAV NA below -15°C (5°F) or above 48°C (118°F). DME/DME RNP-0.3 NA.



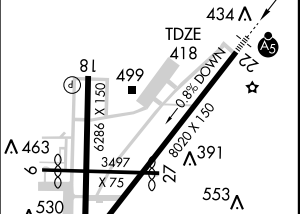
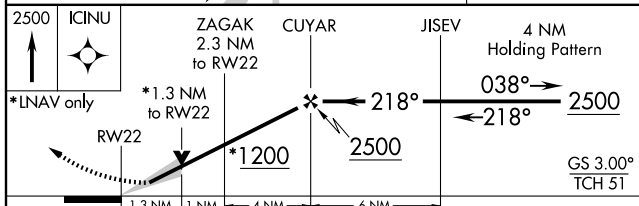
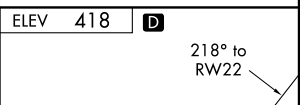
MISSED APPROACH: Climb to 2500 direct ICINU and hold.

ATIS 120.2	EVANSVILLE APP CON * 126.4 226.4	EVANSVILLE TOWER * 118.7(CTAF) 257.8	GND CON 121.9	CLNC DEL 126.6	UNICOM 122.95
----------------------	--	--	-------------------------	--------------------------	-------------------------

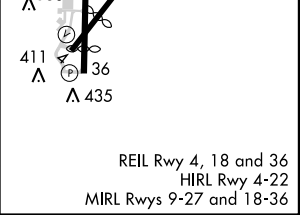


EC-2, 22 OCT 2009 to 19 NOV 2009

EC-2, 22 OCT 2009 to 19 NOV 2009



CATEGORY	A	B	C	D
LPV DA		618/24	200 (200-½)	
LNAV/VNAV DA		910/60	492 (500-1¼)	
LNAV MDA	880/24	462 (500-½)	880/40 462 (500-¾)	880/50 462 (500-1)
CIRCLING	940-1 522 (600-1)	960-1 542 (600-1)	960-1½ 542 (600-½)	980-2 562 (600-2)



REIL Rwy 4, 18 and 36
HIRL Rwy 4-22
MIRL Rwy 9-27 and 18-36