

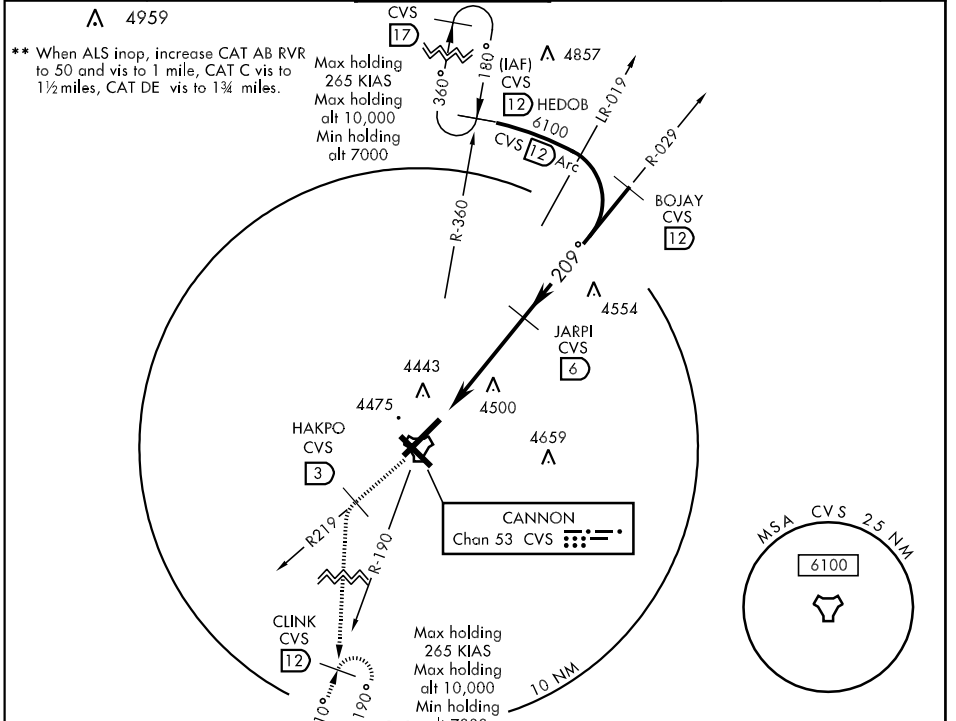
TACAN CVS Chan 53	APCH CRS 209°	Rwy ldg 10,000 TDZE 4295 Arpt Elev 4295	AL-512 [USAF]	CANNON AFB (KCVS)
----------------------	------------------	---	---------------	-------------------

▼ * When ALS inop, increase CAT AB RVR to 50 and vis to 1 mile, CAT C RVR to 60 and vis to 1 1/2 miles, CAT D vis to 1 1/2 miles, CAT E vis to 1 3/4 miles.

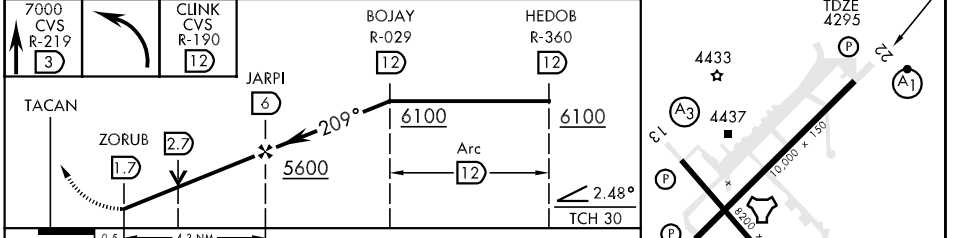
 ALSF-1
A1

 MISSED APPROACH: Climb to 7000 out CVS TACAN R-219, or 3 DME then turn left to CVS R-190/12 (CLINK) and hold.

ATIS ★ 119.1 269.9	CANNON APP CON 125.5 358.3	CANNON TOWER ★ 120.4 270.25	GND CON 121.9 275.8	CLNC DEL 120.2 293.225	ASR
-----------------------	-------------------------------	--------------------------------	------------------------	---------------------------	-----



EMERG SAFE ALT 100 NM 8900



CATEGORY	A	B	C	D	E
S-22 *	4760/24	465 (500-1/2)	4760/40 465 (500-3/4)	4760/50 465 (500-1)	4760/60 465 (500-1 1/4)
CIRCLING	4840-1	545 (600-1)	4840-1 1/2 545 (600-1 1/2)	4860-2 565 (600-2)	5020-2 1/2 725 (800-2 1/2)
S-ASR 22 **	4820/24	525 (600-1/2)	4820/50 525 (600-1)	4820/60	525 (600-1 1/4)

SW-1, 22 OCT 2009 to 19 NOV 2009

SW-1, 22 OCT 2009 to 19 NOV 2009

