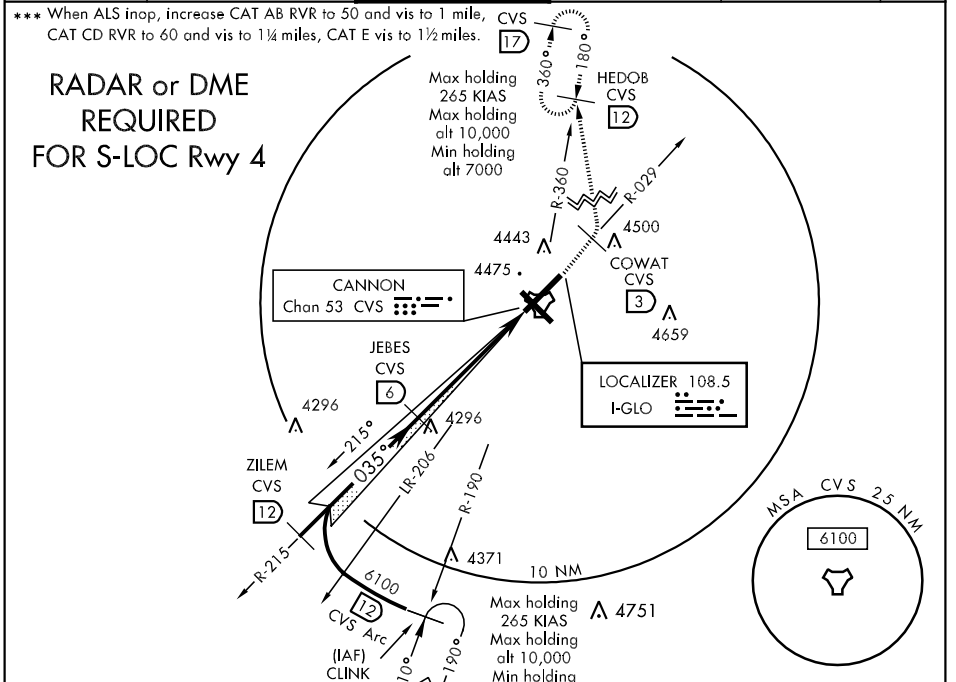


LOC I-GLO <b>108.5</b>	APCH CRS <b>035°</b>	Rwy Idg <b>10,000</b> TDZE <b>4284</b> Arpt Elev <b>4295</b>	AL-512 [USAF]	CANNON AFB (KCVS)
---------------------------	-------------------------	--	---------------	-------------------

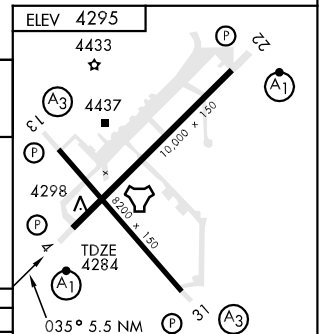
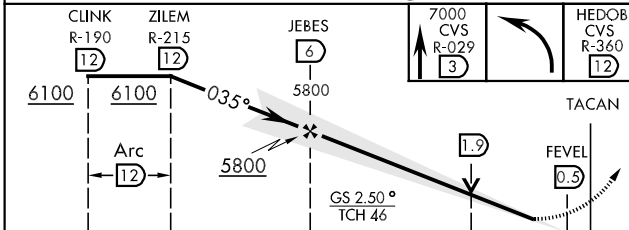
▼ \* When ALS inop, increase to all CAT RVR to 40 and vis to ¾ miles.  
 \*\* When ALS inop, increase CAT ABC RVR to 50 and vis to 1 mile, CAT D RVR to 60 and vis to 1¼ miles, CAT E vis to 1½ miles.

ALSF-1 (A1) MISSED APPROACH: Climb to 7000 out CVS TACAN R-029, at 3 DME then turn left to CVS R-360/12 DMÉ (HEDOB) and hold.

ATIS ★ <b>119.1 269.9</b>	CANNON APP CON <b>125.5 358.3</b>	CANNON TOWER ★ <b>120.4 270.25</b>	GND CON <b>121.9 275.8</b>	CLNC DEL <b>120.2 293.225</b>	ASR
------------------------------	--------------------------------------	---------------------------------------	-------------------------------	----------------------------------	-----



EMERG SAFE ALT 100 NM 8900



CATEGORY	A	B	C	D	E
S-ILS 4 *	4484/24		200	(200-½)	
S-LOC 4 **	4680/24	396 (400-½)	4680/40	396 (400-¾)	4680/50 396 (400-1)
CIRCLING	4840-1	545 (600-1)	4840-1½ 545 (600-1½)	4860-2 565 (600-2)	5020-2½ 725 (800-2½)
S-ASR 4 ***	4700/24 416 (500-½)		4700/40 416 (500-¾)		4700/50 416 (500-1)

HIRL all Rwy  
 (A3) Rwy 31 nstd len 1482'

FAF to MAP 5.5 NM					
Knots	60	90	120	150	180
Min:Sec	5:30	3:40	2:45	2:12	1:50

SW-1, 22 OCT 2009 to 19 NOV 2009

SW-1, 22 OCT 2009 to 19 NOV 2009