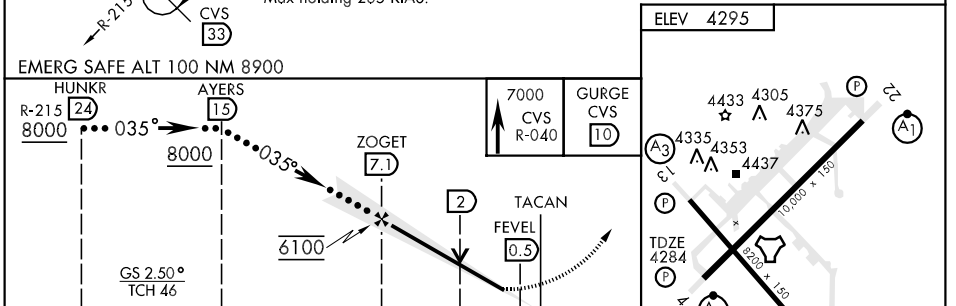
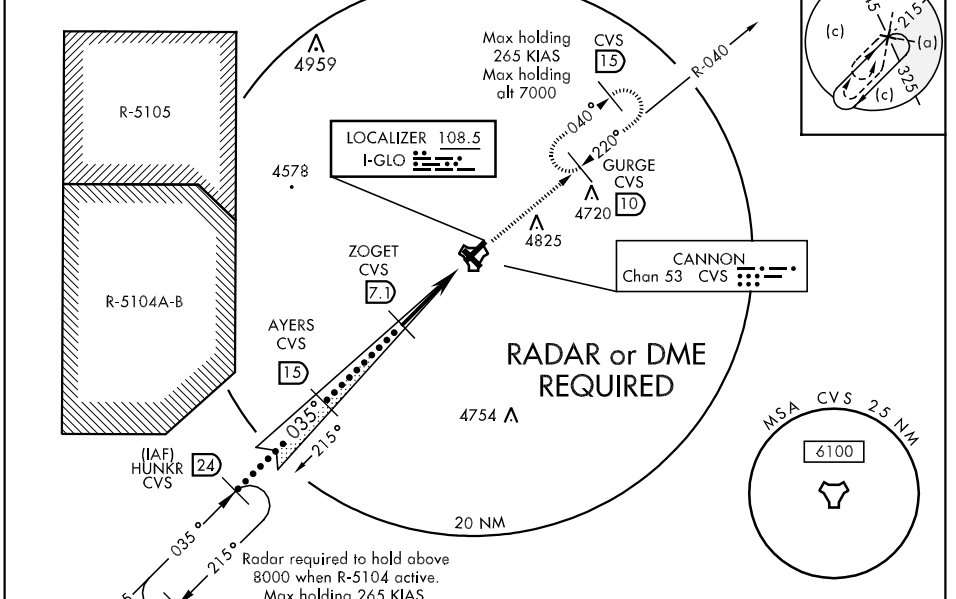


LOC I-GLO 108.5	APCH CRS 035°	Rwy Idg 10,000 TDZE 4284 Arpt Elev 4295	JAL-512 [USAF]	CANNON AFB (KCVS)
---------------------------	-------------------------	--	----------------	-------------------

* When ALS inop, increase CAT CDE RVR to 40 and vis to ¾ mile.
 ** When ALS inop, increase CAT C RVR to 60 and vis to 1 ¼ mile, CAT DE RVR vis to 1 ½ miles.

ATIS ★ 119.1 269.9	CANNON APP CON 125.5 358.3	CANNON TOWER ★ 120.4 270.25	GND CON 121.9 275.8	CLNC DEL 120.2 293.225	ASR
------------------------------	--------------------------------------	---------------------------------------	-------------------------------	----------------------------------	-----

*** When ALS inop, increase CAT CD RVR to 60, vis to 1/4, CAT E vis to 1/2.



CATEGORY	C	D	E
S-ILS 4 *	4484/24	200	(200-½)
S-LOC 4 **	4720/40 436 (500-¾)	4720/50	436 (500-1)
CIRCLING	4780-1½ 485 (500-1½)	4860-2 565 (600-2)	5020-2½ 725 (800-2½)
S-ASR 4 ***	4700/40 416	(500-¾)	4700/50 416 (500-1)

HIRL all Rwy					
A3 Rwy 31 nstd len 1482'					
FAF to MAP 6.6 NM					
Knots	120	140	160	180	200
Min:Sec	3:18	2:49	2:28	2:12	1:58

SW-1, 22 OCT 2009 to 19 NOV 2009

SW-1, 22 OCT 2009 to 19 NOV 2009