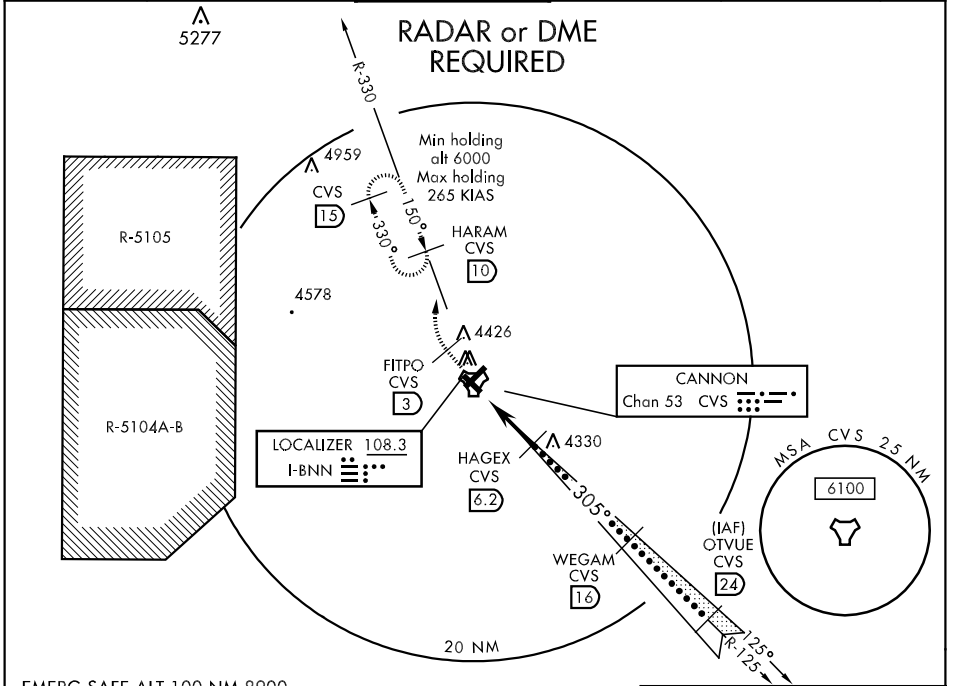


LOC I-BNN 108.3	APCH CRS 305°	Rwy ldg TDZE Arpt Elev 8,200 4270 4295	JAL-512 [USAF]	CANNON AFB (KCVS)
---------------------------	-------------------------	--	----------------	-------------------

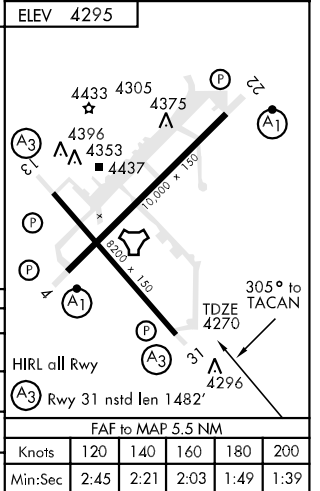
* When ALS inop, increase CAT C vis to 1½ miles, CAT DE vis to 1½ miles.
 ** When ALS inop, increase CAT CD vis to 1 mile, CAT E vis to 1¼ mile.

SSALR MISSED APPROACH: Climb to 6000 via track 310°. At 3 DME (FITPO) turn right intercept CVS R-330 to CVS 10 DME (HARAM) and hold.

ATIS ★ 119.1 269.9	CANNON APP CON 125.5 358.3	CANNON TOWER ★ 120.4 270.25	GND CON 121.9 275.8	CLNC DEL 120.2 293.225	ASR
------------------------------	--------------------------------------	---------------------------------------	-------------------------------	----------------------------------	-----



6000 fr 310° CVS R-330 (3) CVS (10) TACAN HEDOP (7) HAGEX (6.2) WEGAM (16) OTVUE (24) R-125 GS 3.00° TCH 41 ELEV 4295	ELEV 4295		
	6000 fr 310° CVS R-330 (3) CVS (10)	OTVUE (24) R-125 14,500 6500	6100 6500
CATEGORY	C	D	E
S-ILS 31	4470-¾	200 (200-¾)	
S-LOC 31 **	4600-¾	330 (400-¾)	
CIRCLING	4780-1½ 485 (500-1½)	4860-2 565 (600-2)	5020-2½ 725 (800-2½)
S-ASR 31 *	4720-¾ 450 (500-¾)	4720-1	450 (500-1)



SW-1, 22 OCT 2009 to 19 NOV 2009

SW-1, 22 OCT 2009 to 19 NOV 2009