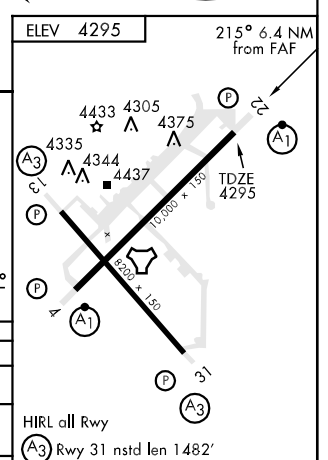
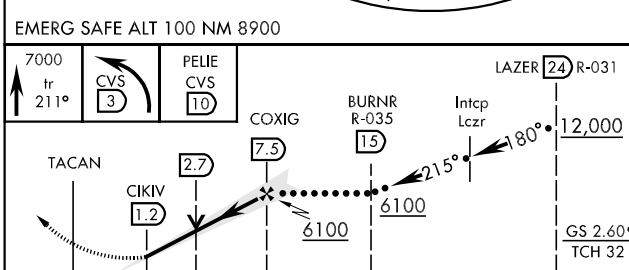
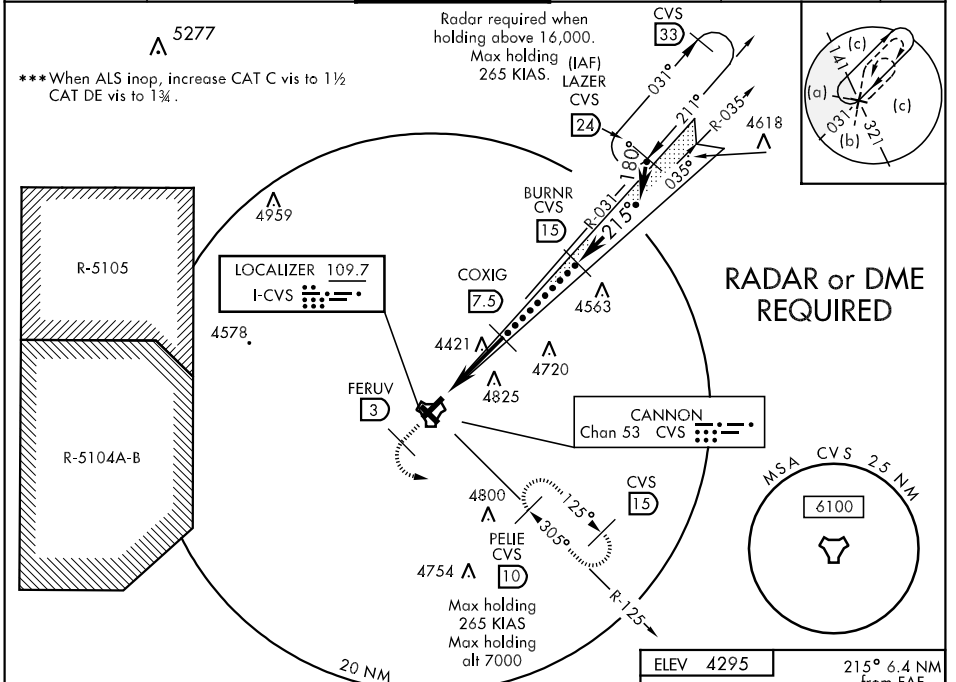


LOC I- CVS 109.7	APCH CRS 215°	Rwy Idg 10,000 TDZE 4295 Arpt Elev 4295	JAL-512 [USAF]	CANNON AFB (KCVS)
-----------------------------------	-------------------------	--	----------------	-------------------

▼ * When ALS inop, increase RVR to 40 and vis to 3/4 mile.
****** When ALS inop, increase CAT C RVR to 60 and vis to 1 1/4 miles, CAT DE to vis to 1 1/2 miles.

ATIS ★ 119.1 269.9	CANNON APP CON 125.5 358.3	CANNON TOWER ★ 120.4 270.25	GND CON 121.9 275.8	CLNC DEL 120.2 293.225	ASR
------------------------------	--------------------------------------	---------------------------------------	-------------------------------	----------------------------------	-----



CATEGORY	C	D	E
S-ILS 22 *	4495/24	200	(200-1/2)
S-LOC 22 **	4740/40 445 (500-3/4)	4740/50 445 (500-1)	
CIRCLING	4780-1 1/2 485 (500-1 1/2)	4860-2 565 (600-2)	5020-2 1/2 725 (800-2 1/2)
S-ASR 22 ***	4820/50 525 (600-1)	4820/60	525 (600-1 1/4)

LOC FAF to MAP 6.3 NM					
Knots	120	140	160	180	200
Min:Sec	3:09	2:42	2:22	2:06	1:53

SW-1, 22 OCT 2009 to 19 NOV 2009

SW-1, 22 OCT 2009 to 19 NOV 2009