

YUMA, ARIZONA

# VOR/DME or TACAN Y RWY 17

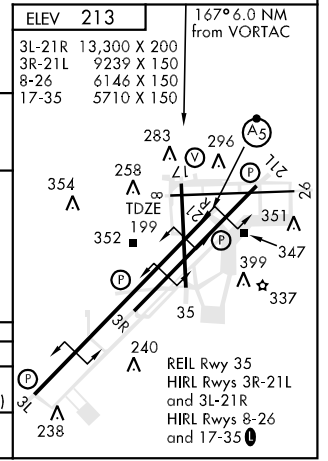
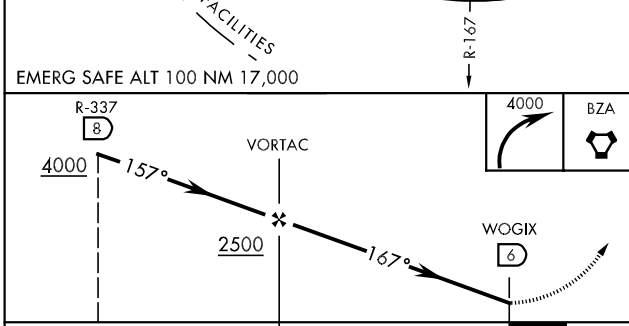
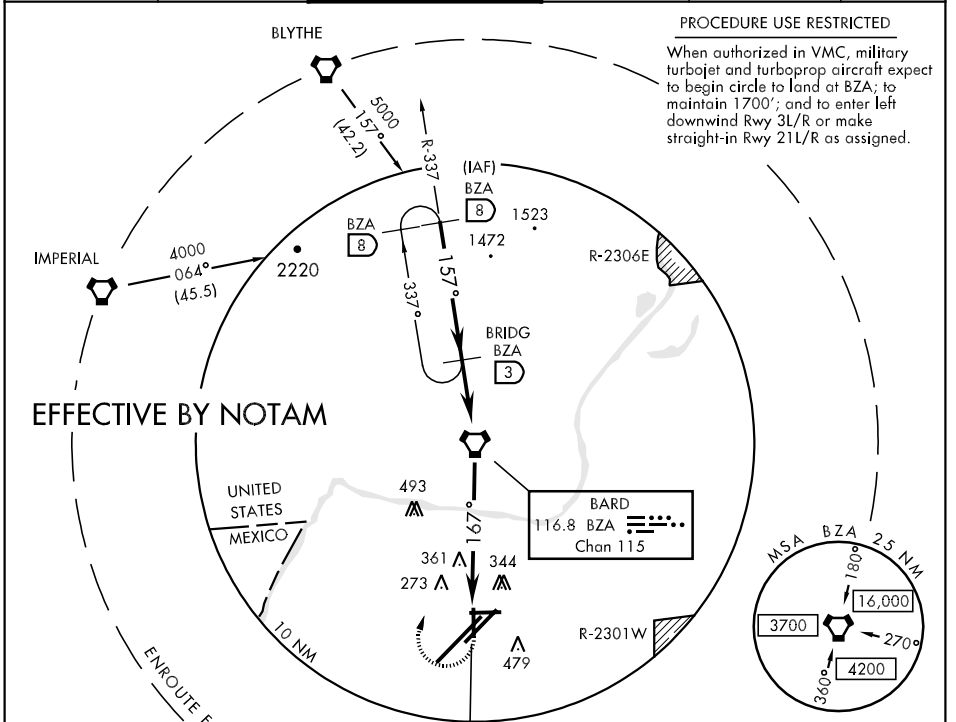
VORTAC BZA <b>116.8</b> Chan <b>115</b>	APCH CRS <b>167°</b>	Rwy ldg TDZE <b>199</b> Arpt Elev <b>213</b>
---	-------------------------	--

AL-511 [USN]

YUMA MCAS/YUMA INTL (KNYL)

**▼** MISSED APPROACH: Climbing right turn to 4000 direct BZA VORTAC, then fly R-337 to BRIDG and hold.

ATIS ★ <b>118.8 273.2</b>	YUMA APP CON <b>124.7 374.8</b>	YUMA TOWER ★ <b>119.3 (CTAF) 0 382.8</b>	GND CON <b>121.9 315.7</b>	CLNC DEL <b>118.0 336.4</b>	ASR/PAR
------------------------------	------------------------------------	---	-------------------------------	--------------------------------	---------



YUMA, ARIZONA  
09295

32°39'N-114°36'W

YUMA MCAS/YUMA INTL (KNYL)

# VOR/DME or TACAN Y RWY 17

SW-4, 22 OCT 2009 to 19 NOV 2009

SW-4, 22 OCT 2009 to 19 NOV 2009